

INSTALLATION MANUAL

10106XTR

LED
BUILT IN



DARK
LIGHT

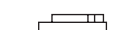
90
CRI

CE EAC UK CA

RoHS
COMPLIANT



137mm



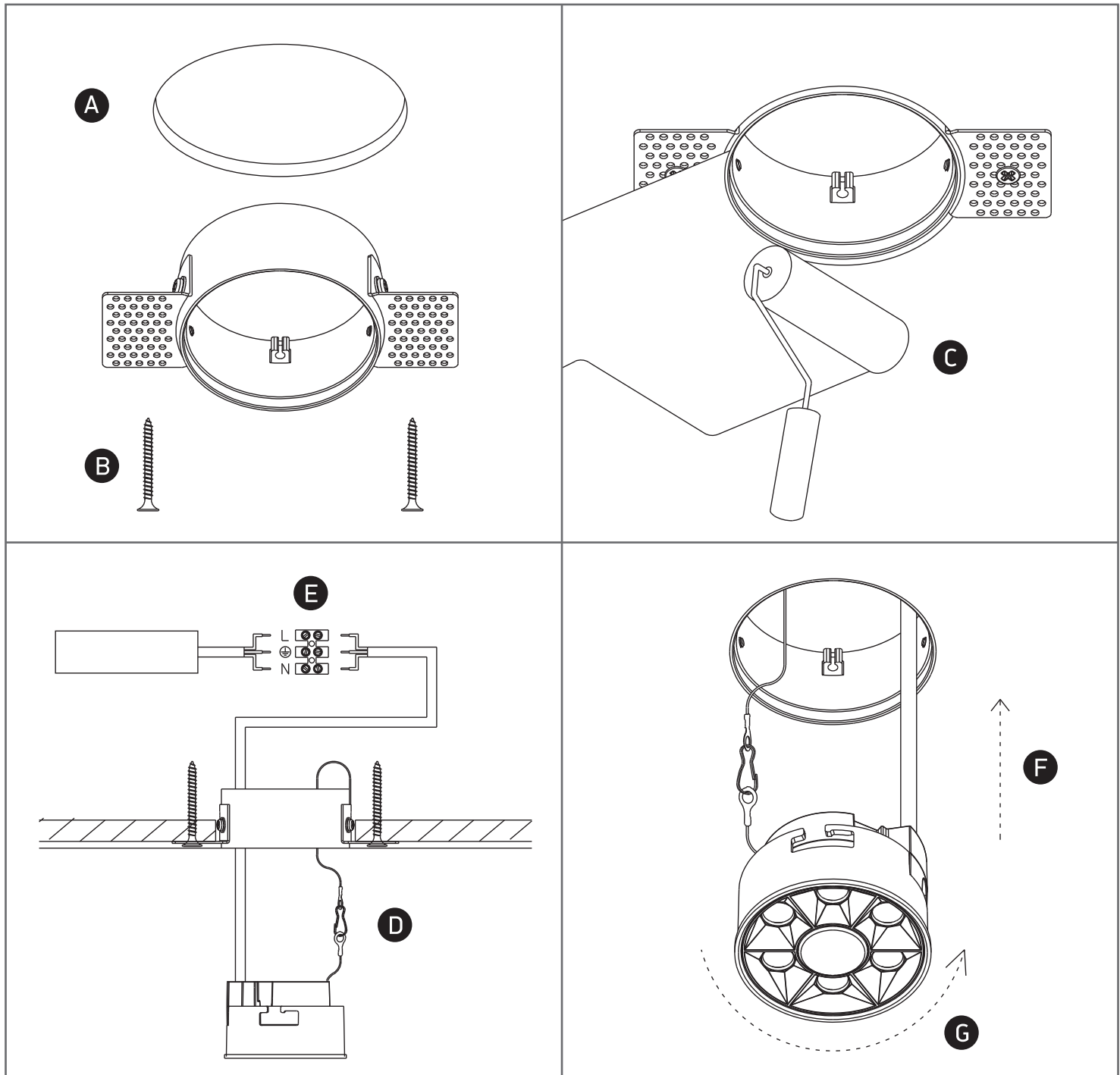
78mm



48mm

one
LIGHT

230V | SMD 3030 | 6W | IP20 | Trimless | Aluminium
Complete with 150mA driver.



Warnings:

1. Make sure that the product is installed properly before connecting to electricity.
2. Do not cover the fitting.
3. Maintenance and installation should only be carried out by a professional electrician.