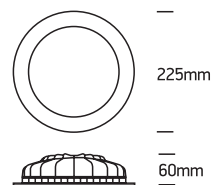


INSTALLATION MANUAL

10122FD

ecodownlight

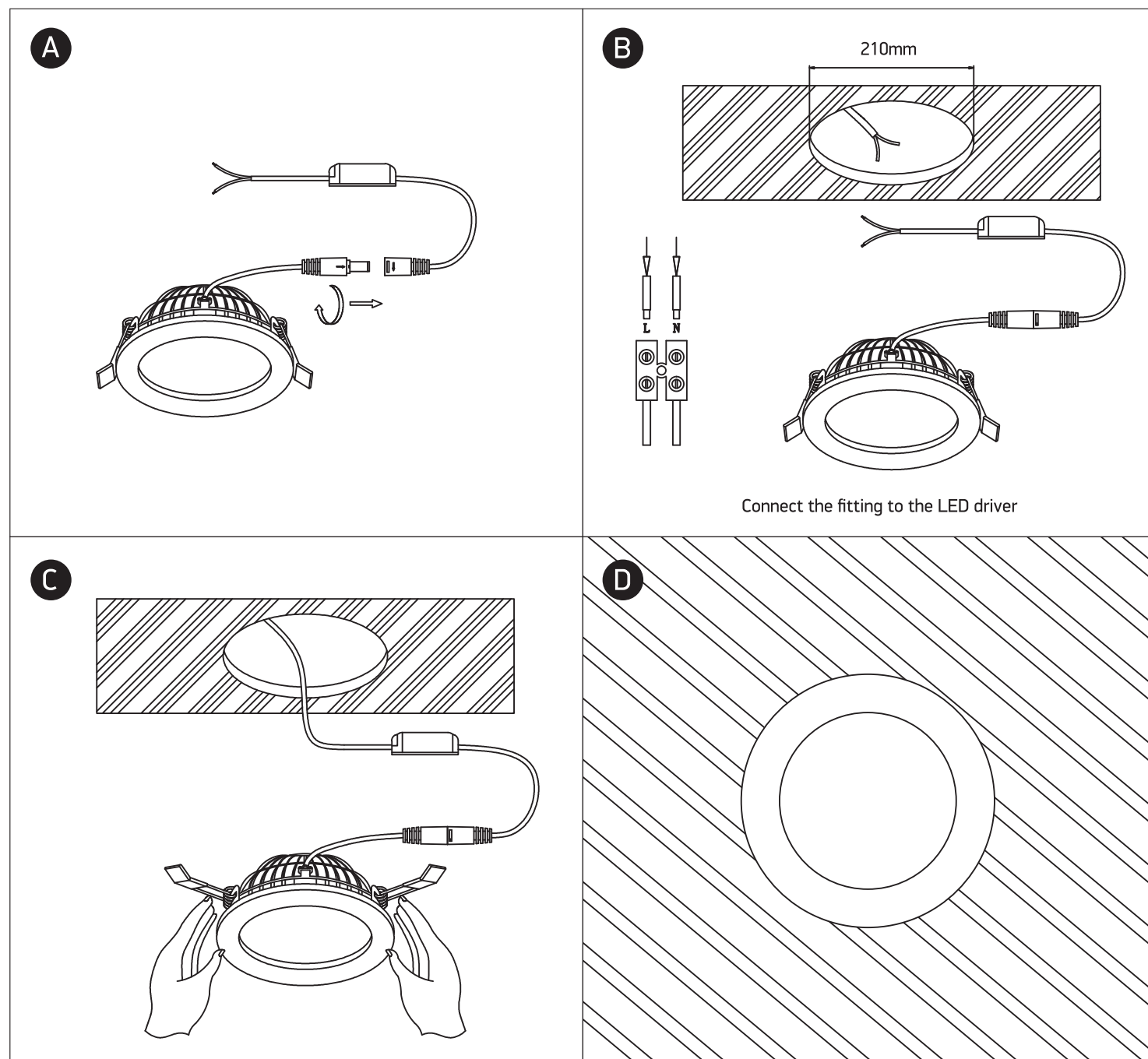
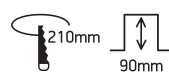


one
LIGHT

230V | SMD 2835 | 22W | IP20 | Die cast

Complete with driver.

80
CRI



Warnings:

1. Make sure that the product is installed properly before connecting to electricity.
2. Do not cover the fitting.
3. Maintenance and installation should only be carried out by a professional electrician.