

INSTALLATION MANUAL

65664AT

LED
BUILT IN



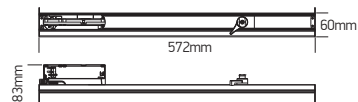
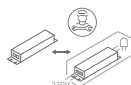
CE ENEC UK CA

RoHS
COMPLIANT

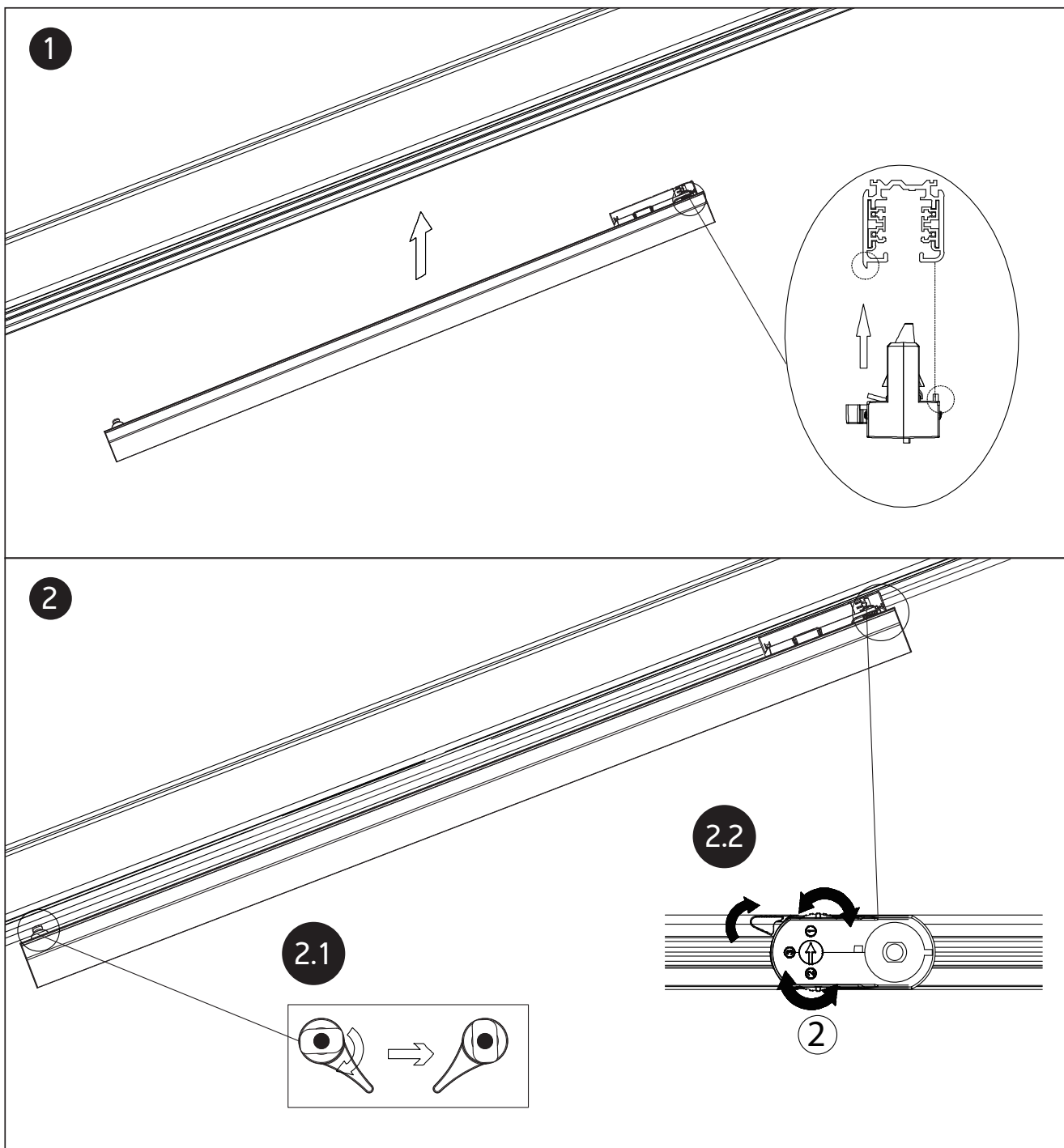


230V | 30W | IP20 | Aluminium + PC

90
CRI



one
LIGHT



Warnings:

1. Make sure that the product is installed properly before connecting to electricity.
2. Do not cover the fitting.
3. Maintenance and installation should only be carried out by a professional electrician.