

# INSTALLATION MANUAL

65664BT

LED  
BUILT IN



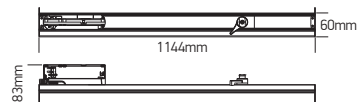
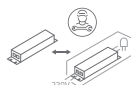
CE ENEC UK CA

RoHS  
COMPLIANT

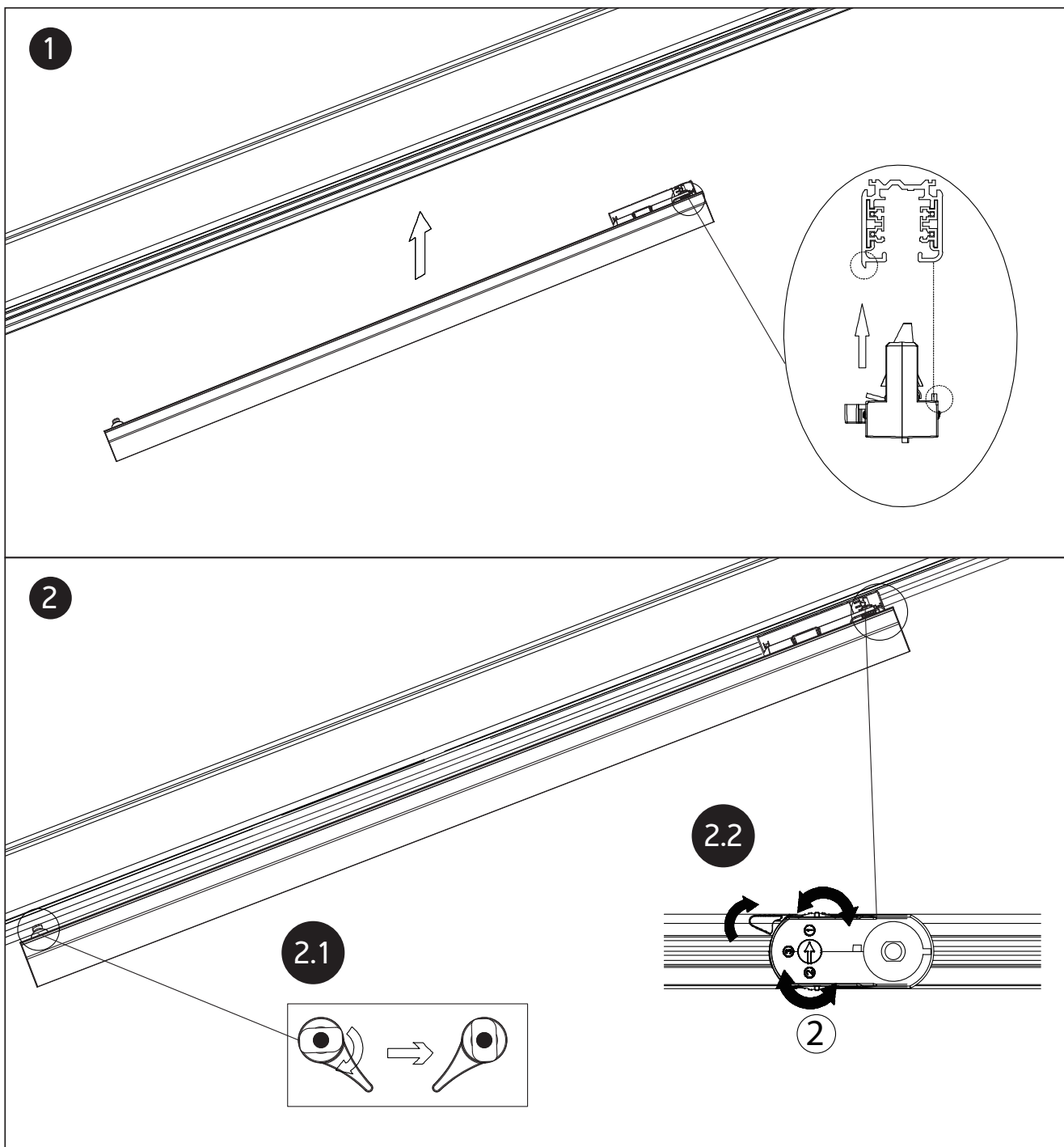


230V | 40W | IP20 | Aluminium + PC

90  
CRI



one  
LIGHT



## Warnings:

1. Make sure that the product is installed properly before connecting to electricity.
2. Do not cover the fitting.
3. Maintenance and installation should only be carried out by a professional electrician.