

# sensIQ

EVO Anthracite  
 EAN 4007841 056636  
 Article number 056636



		2500 W						5 years	
<small>infrared sensor 3 x 100°</small>	<small>3 zones scalable 2-20m</small>	<small>2500 W max. (LED-ready)</small>	<small>IP54</small>	<small>2 - 2000 lux</small>	<small>5 sec - 15 min</small>	<small>ideal 2 - 5 m</small>	<small>energy saving</small>	<small>manufacturer's warranty steinel-professional.de/garantie</small>	<small>CE</small>

## Function description

King of the infrared motion detectors. The revolutionary sensIQ for indoors and out, ideal for building entrances, loading bays, installation height up to 5 m, quadruple sensor system for optimum coverage over a 300° detection angle, 20 m range (tangential), metre-precision reach setting in 3 different directions, heavy-duty relay for high switching capacity. Remote control and corner wall mount bracket included.

## Technical specifications

Dimensions (L x W x H)	172 x 113 x 144 mm	LED lamps > 8 W	500 W
With motion detector	Yes	Capacitive load in µF	176 µF
Manufacturer's Warranty	5 years	Technology, sensors	passive infrared, Light sensor
Settings via	Remote control, Potentiometers, Smart Remote	Mounting height	2,00 – 5,00 m
With remote control	Yes	Mounting height max.	5,00 m
Version	Anthracite	Optimum mounting height	2 m
PU1, EAN	4007841056636	Detection angle	300 °
Type	Motion detectors	Angle of aperture	180 °
Application, place	Indoors, Outdoors	Sneak-by guard	Yes
Application, room	multi-storey / underground car park, outdoors, warehouse, front door, all round the building, courtyard & driveway, Indoors	Capability of masking out individual segments	Yes
Colour	Anthracite	Electronic scalability	No
Colour, RAL	7016	Mechanical scalability	Yes
Includes corner wall mount	Yes	Reach, radial	r = 4 m (42 m <sup>2</sup> )
Installation site	wall, ceiling, corner	Reach, tangential	r = 20 m (1047 m <sup>2</sup> )
		Switching zones	1360 switching zones

# sensIQ

EVO Anthracite  
 EAN 4007841 056636  
 Article number 056636



## Technical specifications

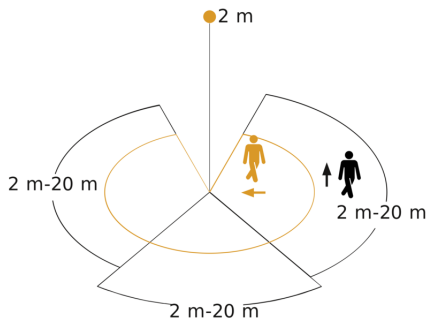
Installation	Surface wiring, Wall, Ceiling, corner
IP-rating	IP54
Ambient temperature	-20 – 50 °C
Material	Plastic
Mains power supply	230 V / 50 – 60 Hz
Switching output 1, number of LEDs / fluorescent lamps	50 pcs.
Switching output 1, floating	No
Fluorescent lamps, electronic ballast	500 W
Fluorescent lamps, series-corrected	1800 VA
Fluorescent lamps, parallel-corrected	500 VA
LED lamps < 2 W	100 W
LED lamps > 2 W < 8 W	250 W

Functions	Normal / test mode, Manual ON / ON-OFF
Twilight setting	2 – 2000 lx
Time setting	5 s – 15 Min.
Basic light level function	No
Main light adjustable	No
Twilight setting TEACH	Yes
Constant-lighting control	No
Interconnection	Yes
Type of interconnection	Master/master
Interconnection via	Cable

## Accessories

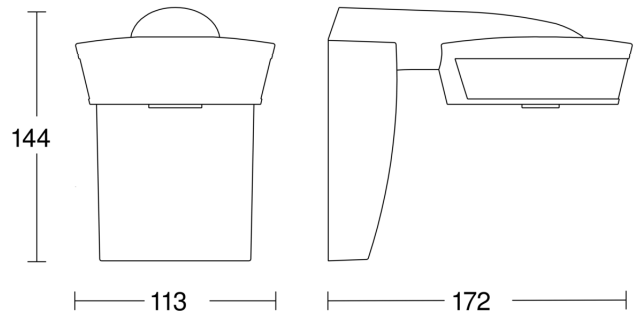
EAN 4007841 009151	Remote control Smart Remote
EAN 4007841 007638	Remote control RC9

### Detection Zone

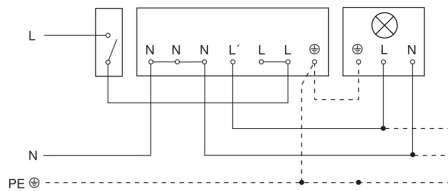


Possible mounting height: 2,00 m - 5,00 m  
 Orange: radial  
 Black: tangential  
 3 scalable zones

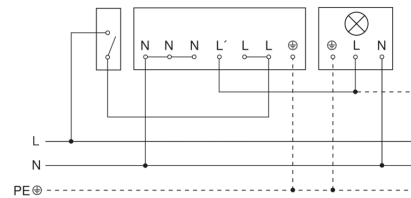
### Dimension Drawing



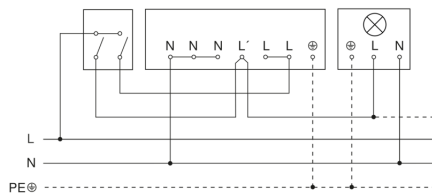
### Light without neutral conductor



### Light with neutral conductor



### Connection using two-circuit switch for manual and automatic operation



### Connection of 4-fold push-button coupler to DALI2 APC

