



1. Features

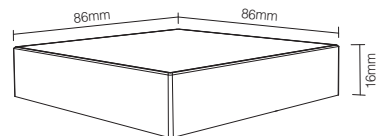
We adopt a high precision capacitive touch screen IC. Touch screen is very stable; 2.4GHz high RF wireless control with long distance controlling, low power consumption and high speed transmitting rate.

This product has T series and B series, and the difference is the method of power supplying. Both series have 4 kinds: T1/B1 4-zone dimmable panel remote; T2/B2 CCT 4-zone panel remote; T3/B3 4-zone RGB/RGBW panel remote; T4/B4 4-zone RGB+CCT panel remote. This product widely work on our smart LED Lighting, LED controller and smart panel controller, etc.

2. Parameters

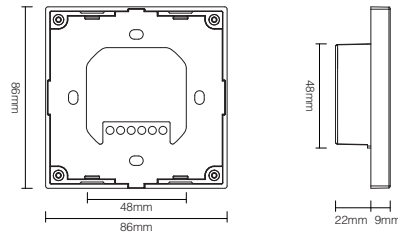
B Series: Powered by 3V(2*AAA Battery)

Working Voltage: 3V(2*AAA Battery) Working Temp.: -10~40°C
 Transmitting Power: 6dBm Control Distance: 30m
 Standby Power Consumption: 20uA Size: 86*86*16mm
 Transmission Frequency: 2.4GHz



T Series: Powered by AC100~240V

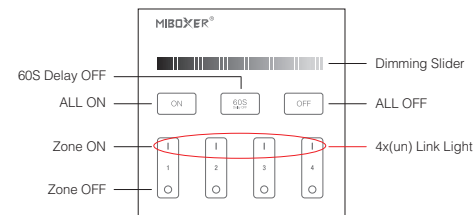
Working Voltage: AC100~240V Working Temp.: -10~40°C
 Standby Power: 0.15W Control Distance: 30m
 Transmitting Power: 6dBm Size: 86*86*31mm
 Transmission Frequency: 2.4GHz



3. Function of keys

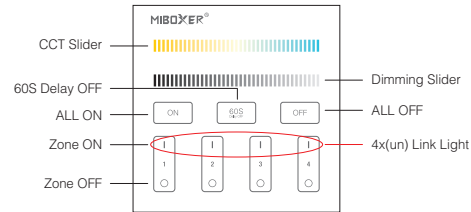
Remark: When touching the button, LED indicating lamp will flash once with different sound (Touch slider with no sound).

B1 & T1 4-Zone Panel Remote (Brightness)



- Touch dimming slider to change the brightness from 1~100%.
- Touch master ON, turn on all linked lights. Long press 5 seconds to turn ON the indicating sound.
- When the light is ON, press "60S Delay OFF", the light will be OFF Automatically after 60 seconds.
- Touch master OFF, turn off all linked lights. Long press 5 seconds to turn OFF the indicating sound.
- Touch Zone ON, turn on zone-linked lights.
- Touch Zone OFF, turn off zone-linked lights.

B2 & T2 4-Zone Panel Remote (Color Temp.)

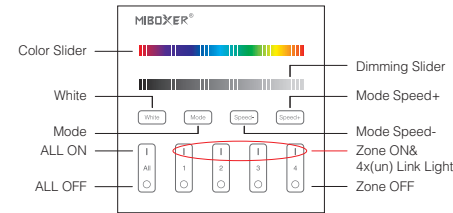


- Touch the slider to change color temperature.
- Touch dimming slider to change the brightness from 1~100%.
- Touch master ON, turn on all linked lights. Long press 5 seconds to turn ON the indicating sound.
- When the light is ON, press "60S Delay OFF", the light will be OFF Automatically after 60 seconds.
- Touch master OFF, turn off all linked lights. Long press 5 seconds to turn OFF the indicating sound.
- Touch Zone ON, turn on zone-linked lights.
- Touch Zone OFF, turn off zone-linked lights.

Panel Remote

Model No.: T1 / T2 / T3 / T4 & B1 / B2 / B3 / B4

B3 & T3 4-Zone Panel Remote (RGBW)



Touch color slider, choose the color you want.

Touch dimming slider to change the brightness from 1~100%.

Touch white button to white light mode.

Switching modes.

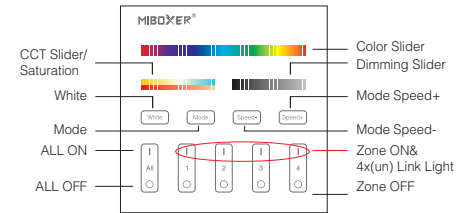
Slow the speed on present dynamic mode.

Accelerate the speed on present dynamic mode.

ALL ON: Touch to turn on all linked lights.
Long press 5 seconds to turn ON the indicating sound.
Zone(1-4) ON: Touch zone ON, turn on zone-linked lights.

ALL OFF: Touch to turn off all linked lights.
Long press 5 seconds to turn OFF the indicating sound.
Zone(1-4) OFF: Touch zone OFF, turn off zone-linked lights.

B4 & T4 4-Zone Panel Remote (RGB+CCT)



Touch color slider, choose the color you want.

Under white light mode, adjust color temperature;
Under color light mode, change color saturation.

Touch dimming slider to change the brightness from 1~100%.

Touch white button to white light mode.

Switching modes.

Slow the speed on present dynamic mode.

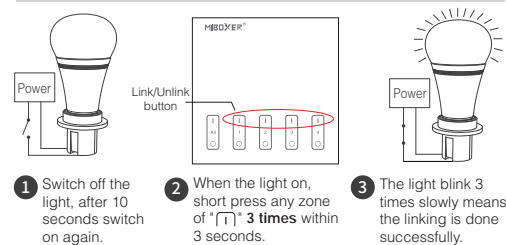
Accelerate the speed on present dynamic mode.

ALL ON: Touch to turn on all linked lights.
Long press 5 seconds to turn ON the indicating sound.
Zone(1-4) ON: Touch zone ON, turn on zone-linked lights.

ALL OFF: Touch to turn off all linked lights.
Long press 5 seconds to turn OFF the indicating sound.
Zone(1-4) OFF: Touch zone OFF, turn off zone-linked lights.

4. Link / Unlink (B1~B4,T1~T4)

Linking Instructions



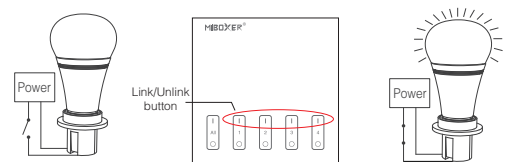
1 Switch off the light, after 10 seconds switch on again.

2 When the light on, short press any zone of "□" 3 times within 3 seconds.

3 The light blink 3 times slowly means the linking is done successfully.

If the light not blink slowly, the linking failed, pls switch off the light again, and follow the above steps again.

Unlinking Instructions



1 Switch off the light, after 10 seconds switch on again.

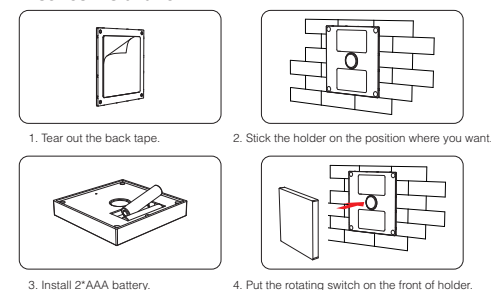
2 When the light on, short press "□" 5 times within 3 seconds.

3 The light blinking 10 times quickly, means the unlinking successfully.

If the light not blink quickly, the unlink failed, pls switch off the light again, and follow the above steps to unlink again.

5. Installation

B series Installation



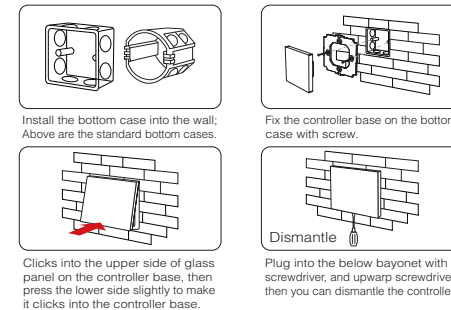
1. Tear out the back tape.

2. Stick the holder on the position where you want.

3. Install 2*AAA battery.

4. Put the rotating switch on the front of holder.

T series Installation/ Dismantlement



Install the bottom case into the wall; Above are the standard bottom cases.

Fix the controller base on the bottom case with screw.

Clicks into the upper side of glass panel on the controller base, then press the lower side slightly to make it clicks into the controller base.

Plug into the below bayonet with a screwdriver, and upward screwdriver, then you can dismantle the controller.

6. Attention

1. Please check the cable, and make the circuit is correct before power on.
2. When installation, pls handle with care to avoid the broken of the T series glass panel.
3. Please do not use lighting fixtures around the mental area and high magnetic field, otherwise, it will badly affect the control distance.



Made in China