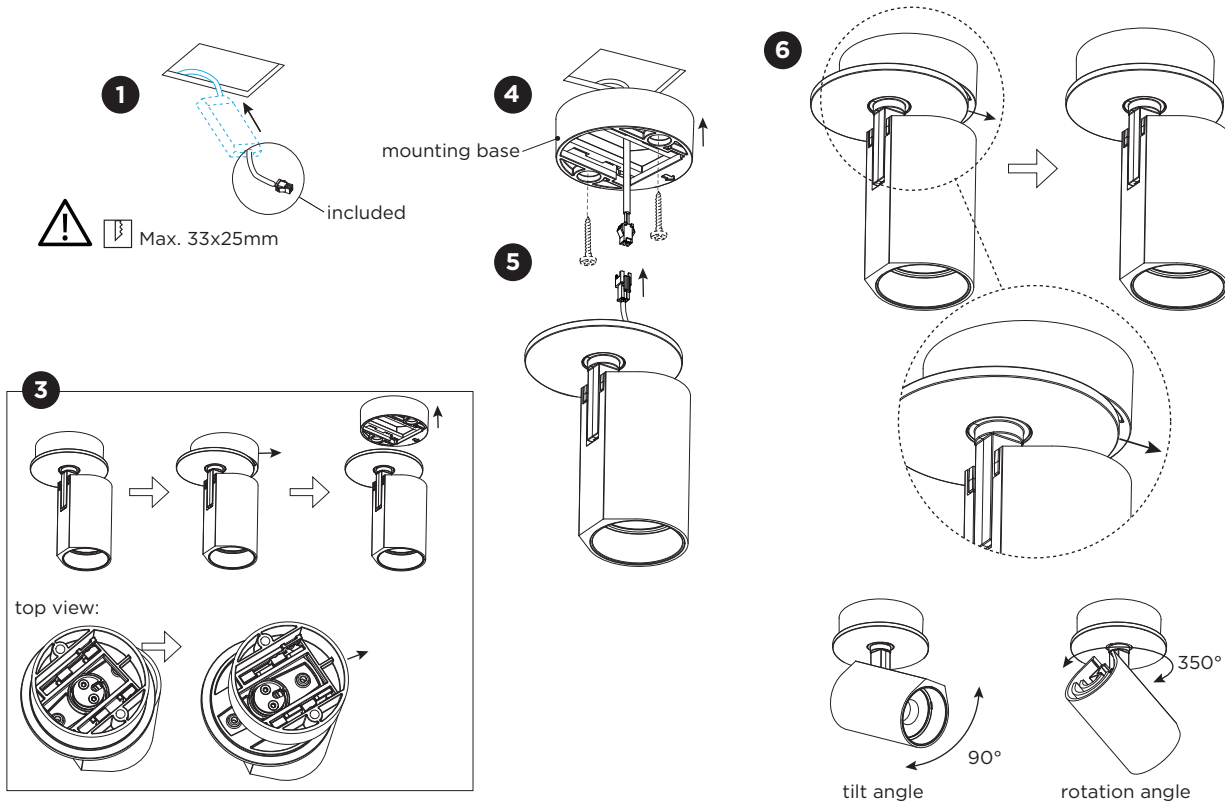


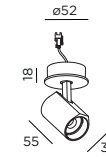
CENO semi recessed

INSTALLATION INSTRUCTIONS | OCTOBER 2024



DIMENSIONS

1.0 SEMI RECESSED



MOUNTING INSTRUCTION

- 1 Make a ceiling cut-out according to shown measurements and place the driver in the ceiling. Note that some drivers will not fit through this cut-out and will have to be placed through an inspection hole.
- 2 **POWER CONNECTION**
Always use a driver according to the specifications of the LED module.
Single connection

Multiple connection
- 3 Push the mounting base horizontally as shown to unlock it from the luminaire.
- 4 Mount the base on the ceiling with screws (screws are not included).
- 5 Connect the plugs and attach the luminaire back to the mounting base.
- 6 Lock the luminaire on the mounting base by pushing the luminaire horizontally as shown.

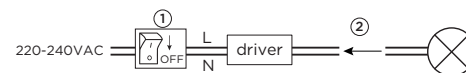


Only to be installed outside arms reach.



Driver must be powered off before connecting the cables.

Before connecting the luminaire/LED module to the driver please make sure the driver is not powered but disconnected from the mains. The driver can only be powered when the luminaire/LED module is already connected. Disregarding this instruction might damage or even destroy the luminaire/LED module.



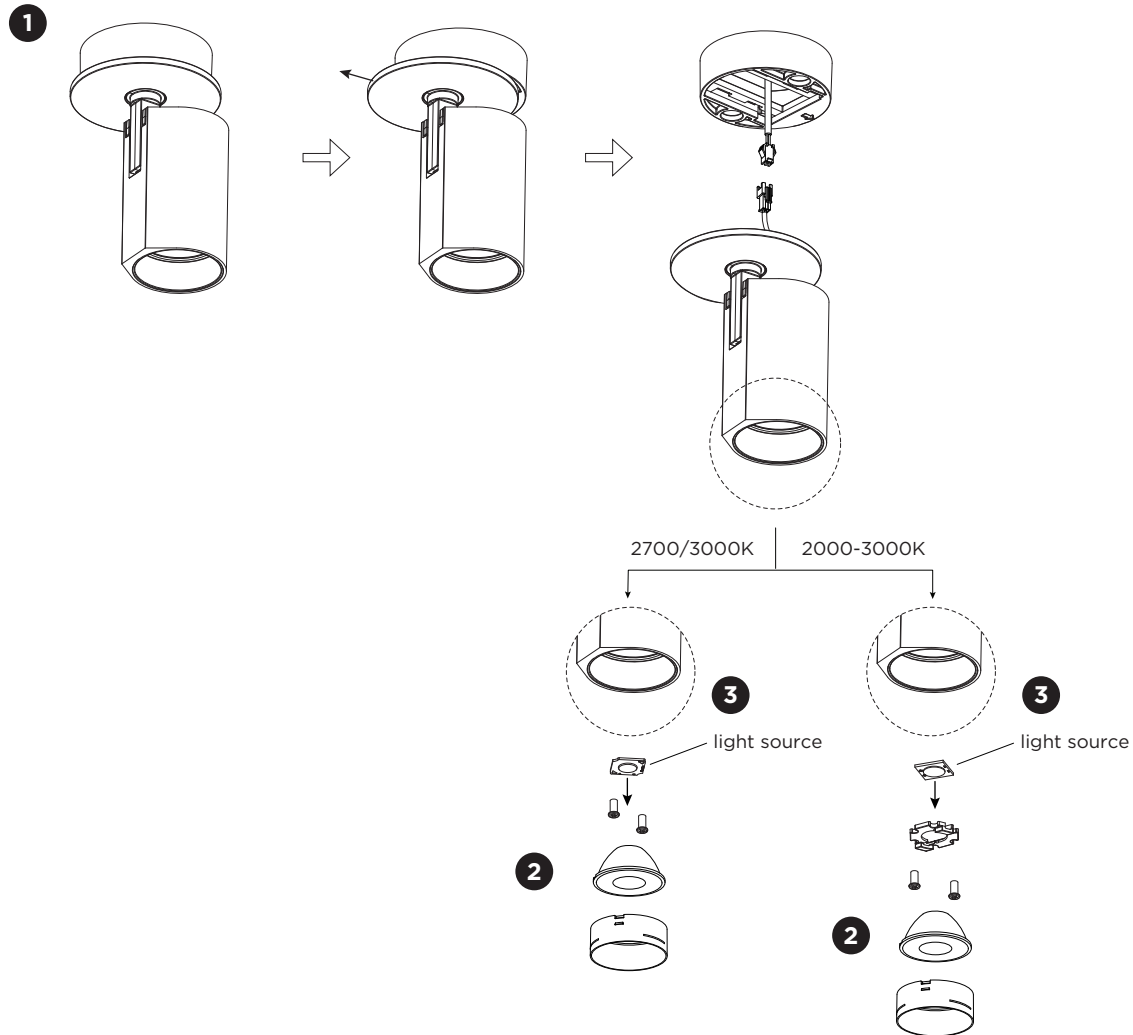
WEVER & DUCRÉ
LIGHTING

WEVER & DUCRÉ BV

Spinnerijstraat 99/21, 8500 Kortrijk, Belgium
weverducre.com

CENO semi recessed

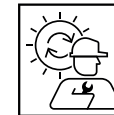
INSTALLATION INSTRUCTIONS | OCTOBER 2024



DISMOUNTING AND RECYCLING INSTRUCTIONS

Light source

- 1 Dismount the fixture from the ceiling by sliding it in the opposite direction on the mounting base and loosening the wiring.
- 2 Pull out the snout and lens.
- 3 Loosen the wires and unscrew the holder or light source to remove the light source.



The light source is replaceable by Wever & Ducré or by a professional with explicit authorisation. For more information please contact your local Wever & Ducré customer service point.

This luminaire contains a light source with the corresponding energy class:

colour temperature	Energy class
2700K/3000K	
2000-3000K	