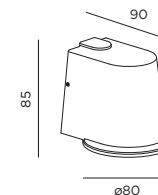
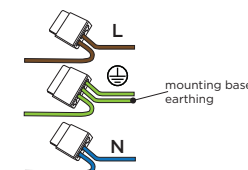


## DIMENSIONS



## MOUNTING INSTRUCTION

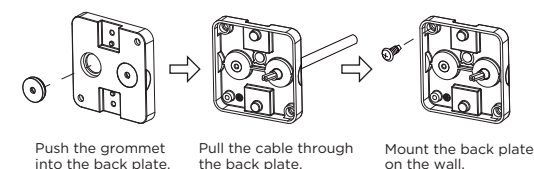
- 1 Remove the mounting base from the fixture by loosening the socket screws.
- 2 Mount the base on the wall with screws (screws are not included).
- 3 **POWER CONNECTION**  
Connect to 220-240V.



Connect the earth cable.

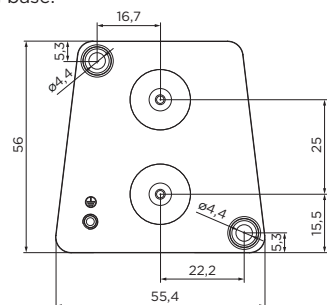


Always use a matching grommet based on the used 220-240V cable and the corresponding type in the overview table. for example:



- 4 Fix the luminaire on the base with the socket screws.

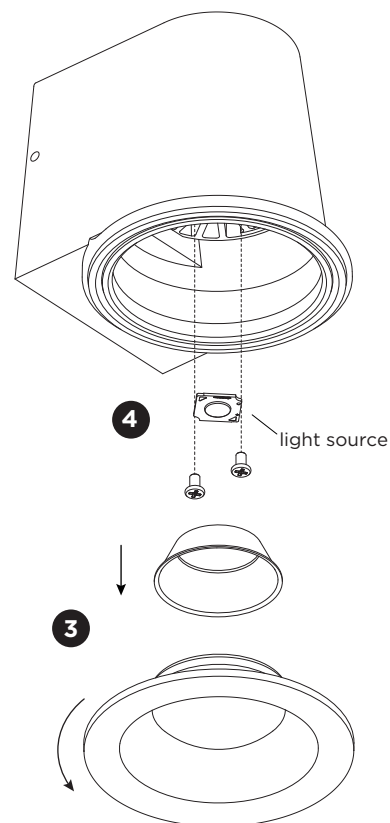
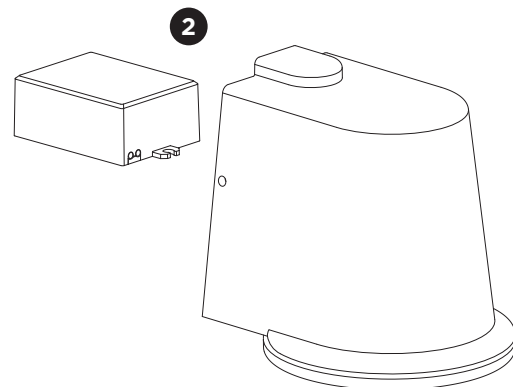
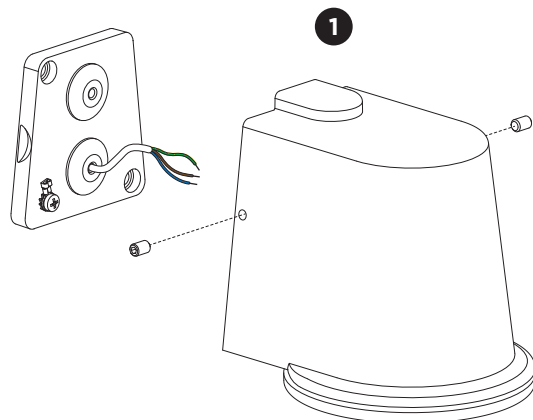
Mounting base:



Always use a matching grommet in the overview table.

		A	B	C
CABLE				
TYPE	ROUND H05RN-F H07RN8-F H07RN-F	ROUND H05RN-F	ROUND	
OUTSIDE Ø	min 6.8mm max 8.9mm	min 5mm max 6.8mm	min 1.5mm max 2.6mm	
CONDUCTION SECTION	2or3x 0.75mm <sup>2</sup> 2or3x 1.0mm <sup>2</sup> 2or3x 1.5mm <sup>2</sup>	2or3x 0.75mm <sup>2</sup> 2x 1.0mm <sup>2</sup>	0.75mm <sup>2</sup> 1.5mm <sup>2</sup>	

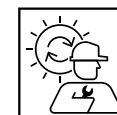




## DISMOUNTING AND RECYCLING INSTRUCTIONS

### Light source & driver

- 1 Dismount the fixture from the mounting base by loosening the socket screws and wiring.
- 2 Loosen the wires to remove the driver.
- 3 Unscrew the cover and remove the reflector.
- 4 Loosen the wires and unscrew the light source to remove it.



The light source is replaceable by Wever & Ducré or by a professional with explicit authorisation. For more information please contact your local Wever & Ducré customer service point.



The driver is replaceable by Wever & Ducré or by a professional with explicit authorisation. For more information please contact your local Wever & Ducré customer service point.



This luminaire contains a light source with the energy class D.



Use green electricity to light up your luminaire.