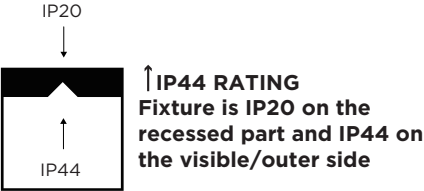
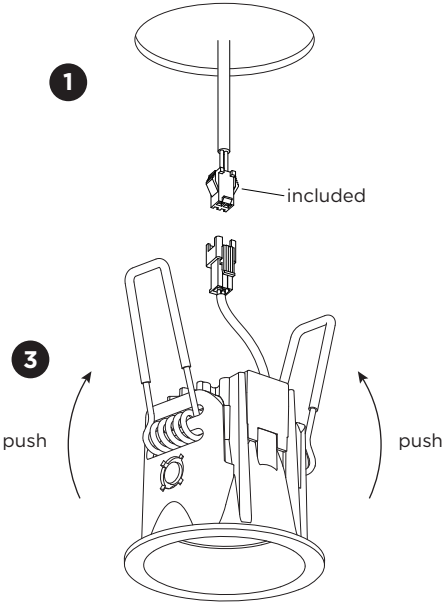


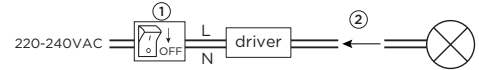
# DEEP POINT IP44

INSTALLATION INSTRUCTIONS | DECEMBER 2024

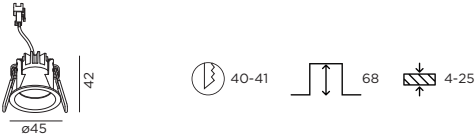


Driver must be powered off before connecting the cables.

Before connecting the luminaire/LED module to the driver please make sure the driver is not powered but disconnected from the mains. The driver can only be powered when the luminaire/LED module is already connected. Disregarding this instruction might damage or even destroy the luminaire/LED module.



## DIMENSIONS

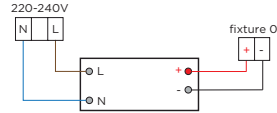


## MOUNTING INSTRUCTION

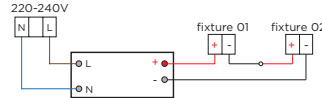
1 Make a hole in the ceiling according to the prescribed dimensions.

2 **POWER CONNECTION**  
Always use a driver according to the specifications of the LED module.

### Single connection



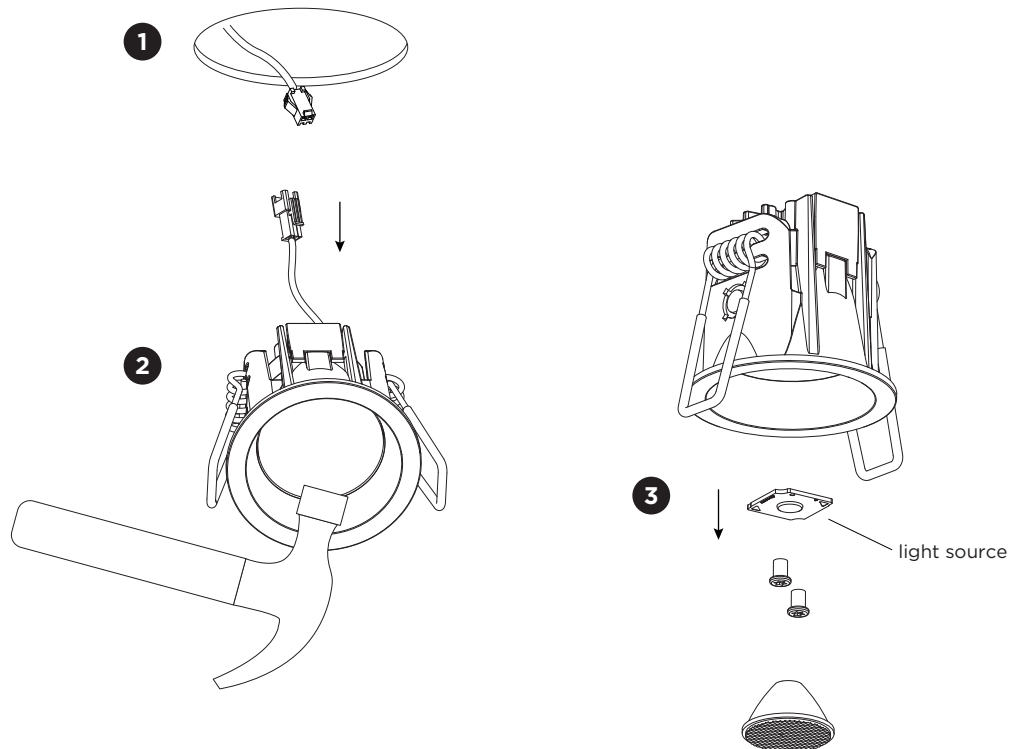
### Multiple connection



3 Push the springs upwards and insert the fixture in the ceiling hole.

# DEEP POINT IP44

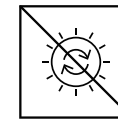
INSTALLATION INSTRUCTIONS | DECEMBER 2024



## DISMOUNTING AND RECYCLING INSTRUCTIONS

### Light source

- 1** Take the luminaire out of the ceiling hole and disconnect the plugs.
- 2** Break the glass.
- 3** Take out the lens and unscrew the light source to remove it.



The light source is not replaceable.



This luminaire contains a light source with the energy class E.