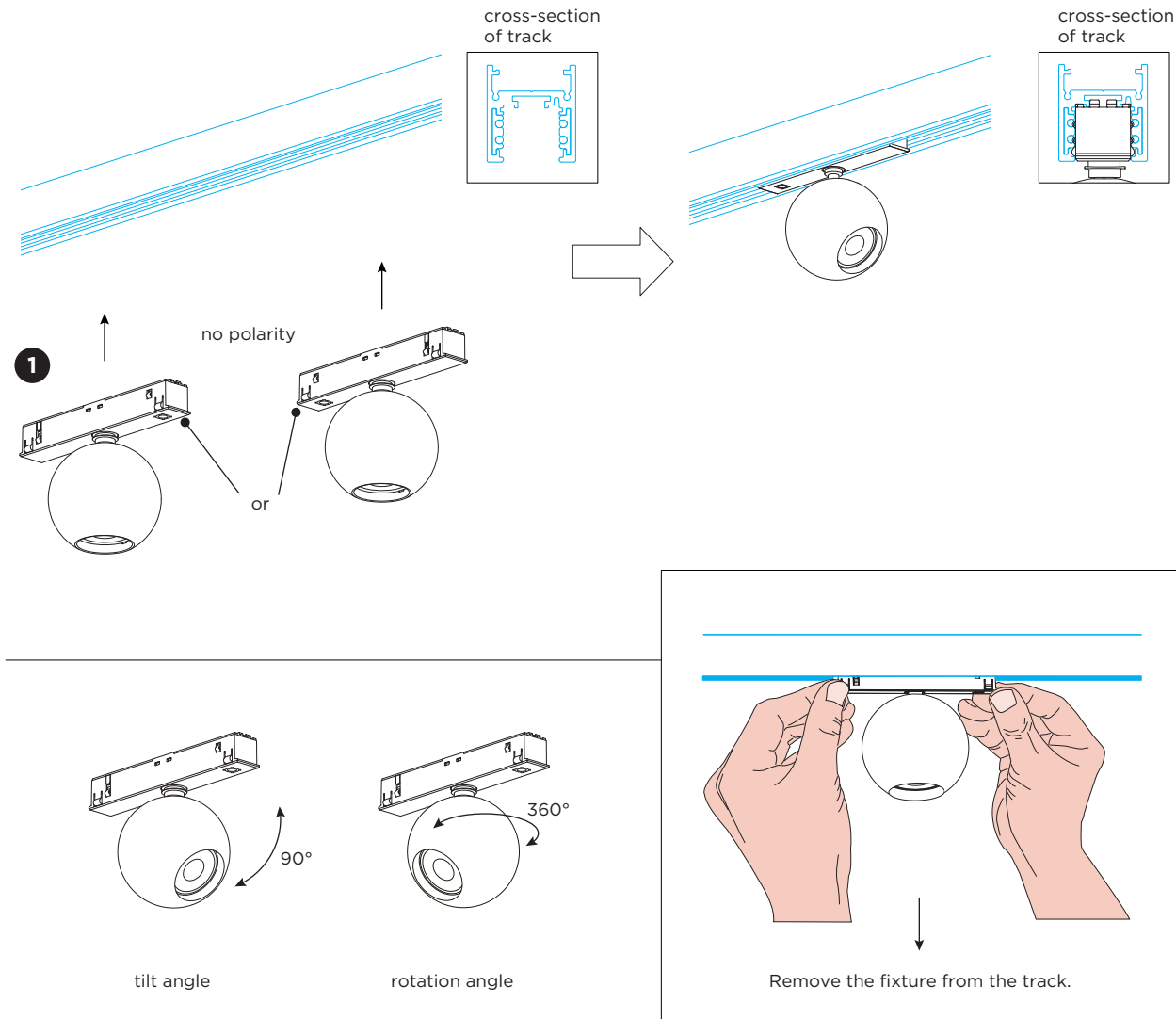
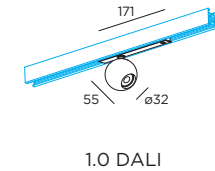
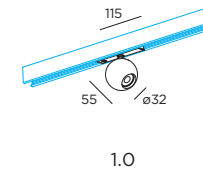


LECA on STREX 1.0

INSTALLATION INSTRUCTIONS | JUNE 2025



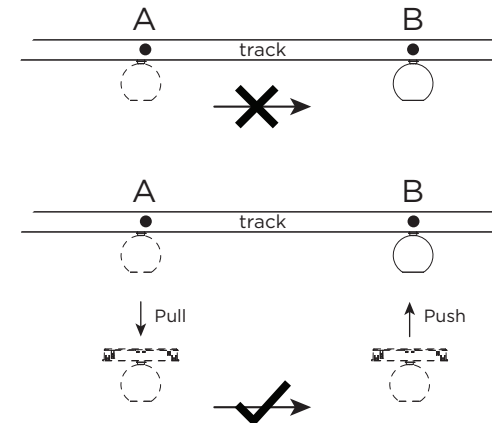
DIMENSIONS



MOUNTING INSTRUCTION

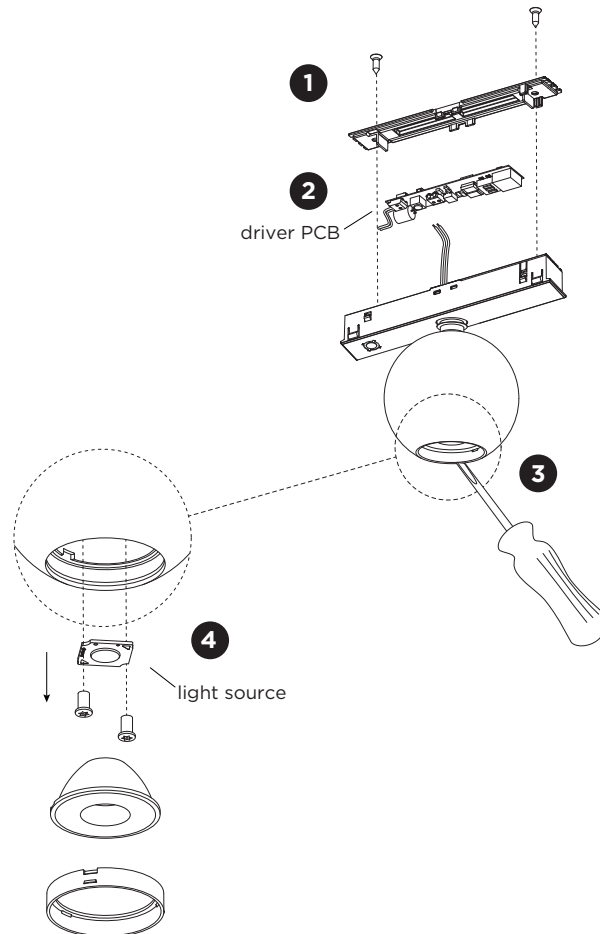
- 1 Push the fixture into the track at the preferred location.

Note: it's not allowed to slide the fixture in the track. If you want to change the location of the fixture in the track, please pull the fixture out of the track and install it on the correct position.



LECA on STREX 1.0

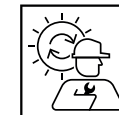
INSTALLATION INSTRUCTIONS | JUNE 2025



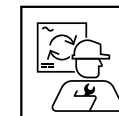
DISMOUNTING AND RECYCLING INSTRUCTIONS

Light source & driver PCB

- 1 Unscrew the top screws and remove the lid.
- 2 Disconnect the wires and remove the driver PCB.
- 3 Pull out the snout by using a flat tool and remove the lens.
- 4 Unscrew the screws, disconnect the wires and remove the light source.



The light source is replaceable by Wever & Ducré or by a professional with explicit authorisation. For more information please contact your local Wever & Ducré customer service point.



The driver is replaceable by Wever & Ducré or by a professional with explicit authorisation. For more information please contact your local Wever & Ducré customer service point.



This luminaire contains a light source with the energy class D.



Use green electricity to light up your luminaire.