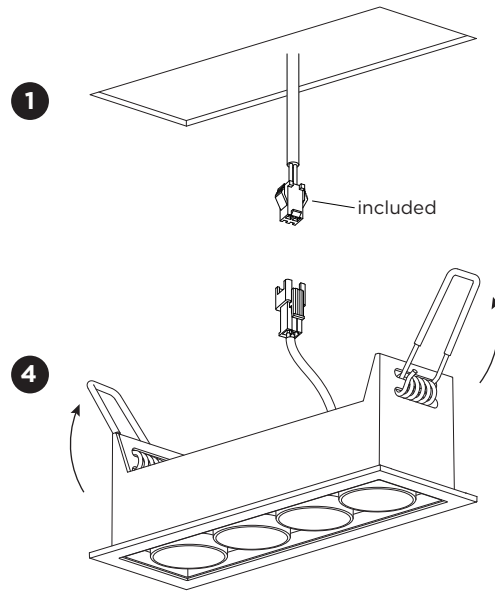
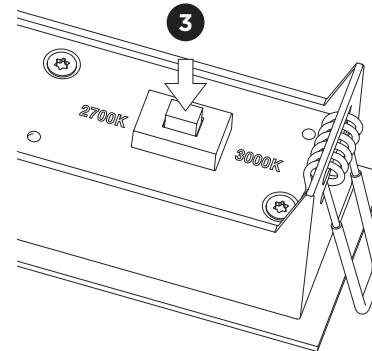


LINOO RECESSED

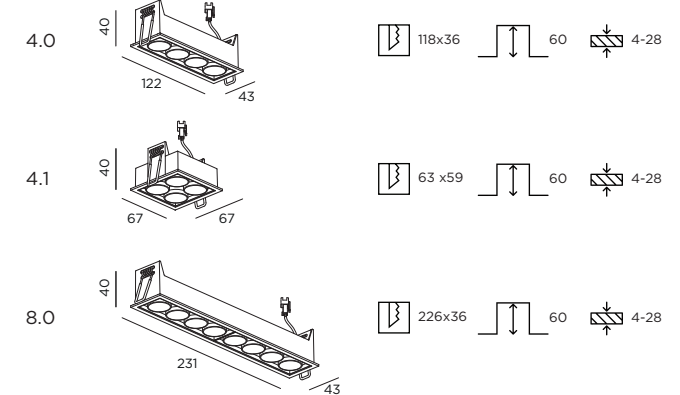
INSTALLATION INSTRUCTIONS | MARCH 2025



Power must be switched off before changing the colour temperature.



DIMENSIONS



MOUNTING INSTRUCTION

1 Make a hole in the ceiling according to the prescribed dimensions.

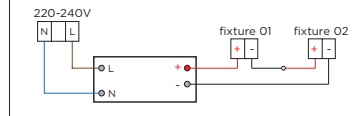
2 POWER CONNECTION

Always use a driver according to the specifications of the LED module.

Single connection



Multiple connection



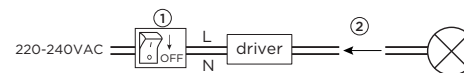
3 Change the colour temperature with the switch on the backside. The power must be switched off before changing the colour temperature.

4 Push the springs upwards and insert the fixture in the ceiling hole.



Driver must be powered off before connecting the cables.

Before connecting the luminaire/LED module to the driver please make sure the driver is not powered but disconnected from the mains. The driver can only be powered when the luminaire/LED module is already connected. Disregarding this instruction might damage or even destroy the luminaire/LED module.

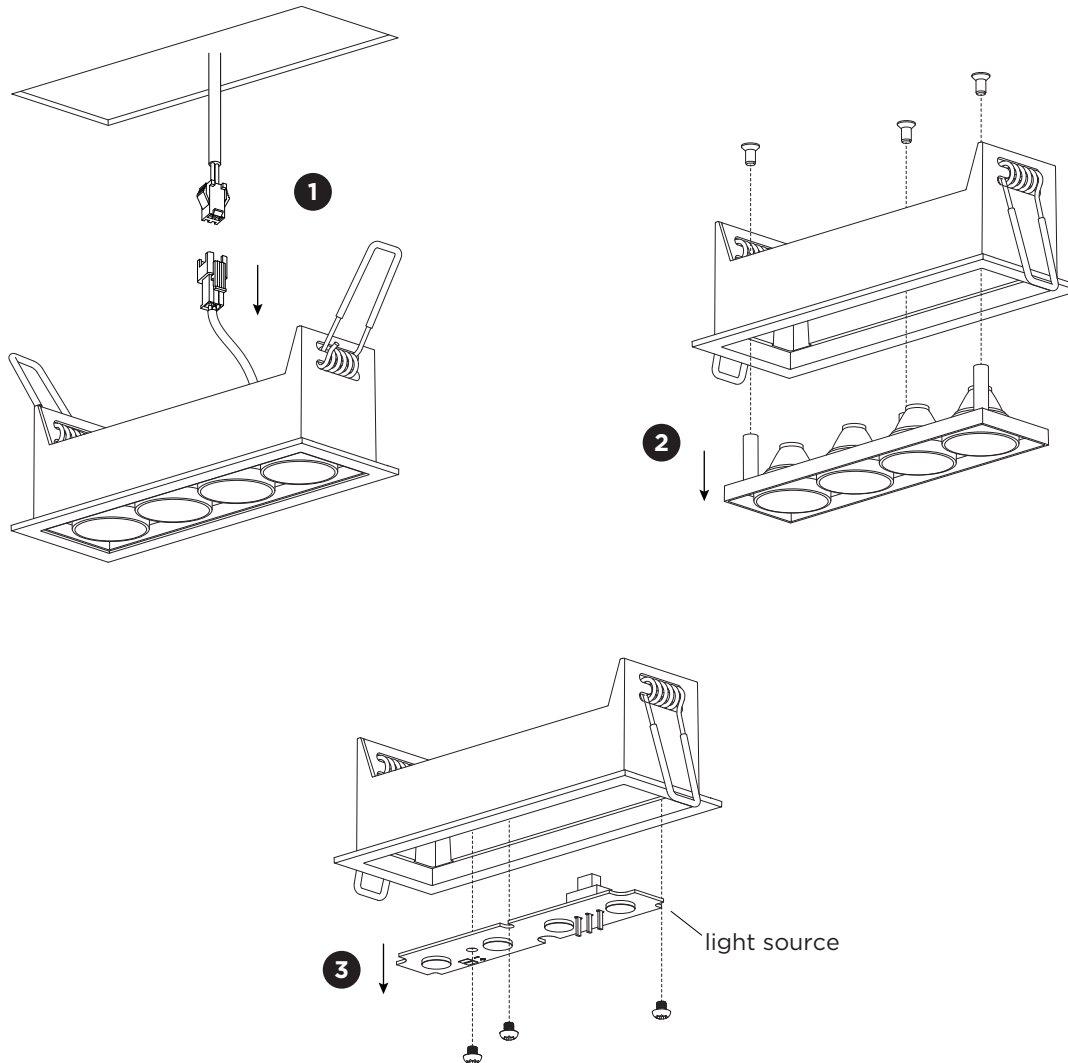


WEVER & DUCRÉ
LIGHTING

WEVER & DUCRÉ BV
Spinnerijstraat 99/21, 8500 Kortrijk, Belgium
weverducre.com

LINOO RECESSED

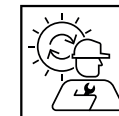
INSTALLATION INSTRUCTIONS | MARCH 2025



DISMOUNTING AND RECYCLING INSTRUCTIONS

Light source

- 1** Take the luminaire out of the ceiling hole and unplug the wires.
- 2** Remove the reflector and lenses by loosening the screws.
- 3** Unscrew the light source to remove it.



The light source is replaceable by Wever & Ducreé or by a professional with explicit authorisation. For more information please contact your local Wever & Ducreé customer service point.



This luminaire contains a light source with the energy class F.



Use green electricity to light up your luminaire.



WEVER & DUCRÉ
LIGHTING

WEVER & DUCRÉ BV

Spinnerijstraat 99/21, 8500 Kortrijk, Belgium
weverducre.com