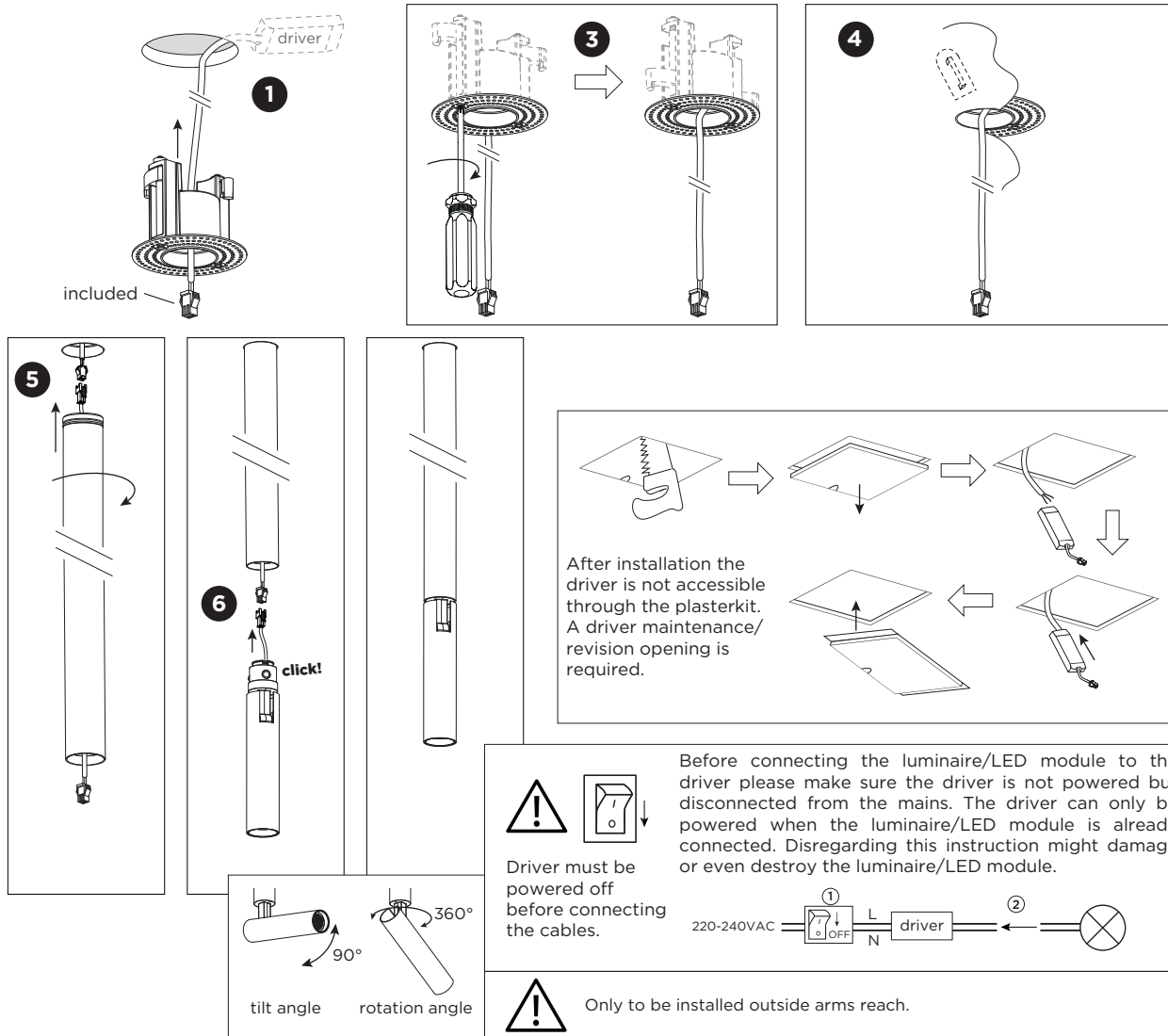
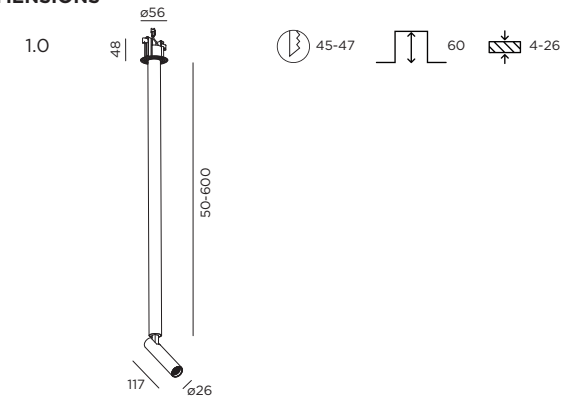


MATCH stick TRIMLESS

INSTALLATION INSTRUCTIONS | DECEMBER 2024



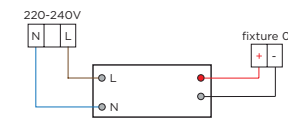
DIMENSIONS



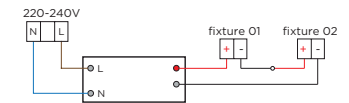
MOUNTING INSTRUCTION

- 1** Make a hole in the ceiling according to the prescribed dimensions and insert the plasterkit in the hole.
- 2 POWER CONNECTION**
Always use a driver according to the specifications of the LED module.

Single connection



Multiple connection

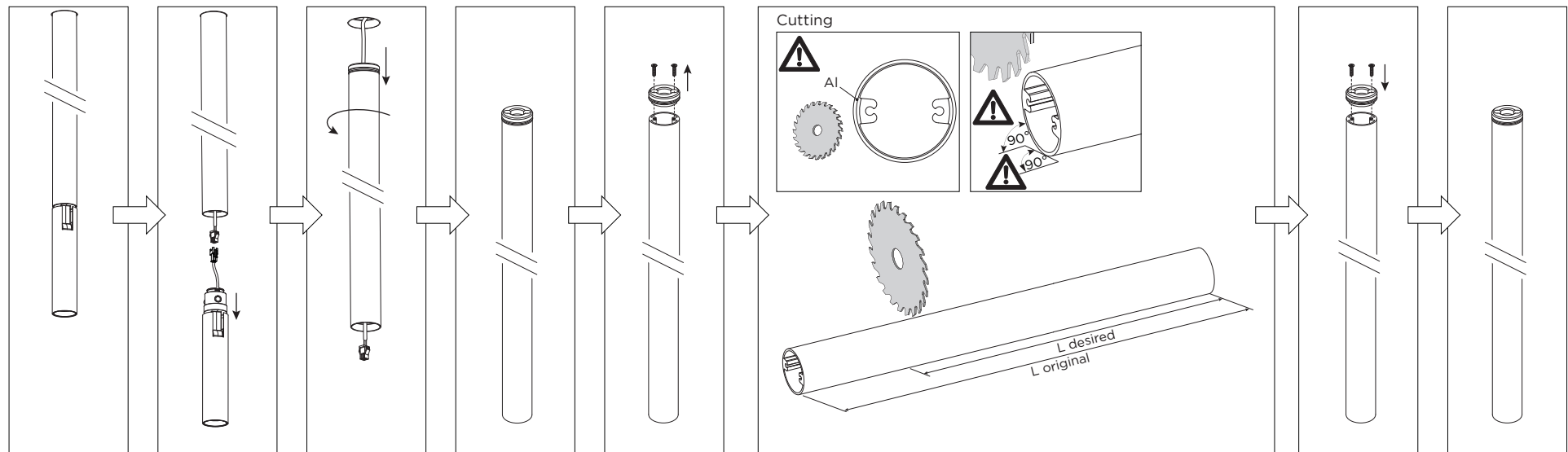


- 3** Tighten both screws. The plasterkit will clamp itself into the ceiling.
- 4** Plaster and paint the surface.
- 5** Install the stick to the plasterkit by screwing it in.
- 6** Connect the plugs and click the fixture into the stick.

MATCH stick TRIMLESS

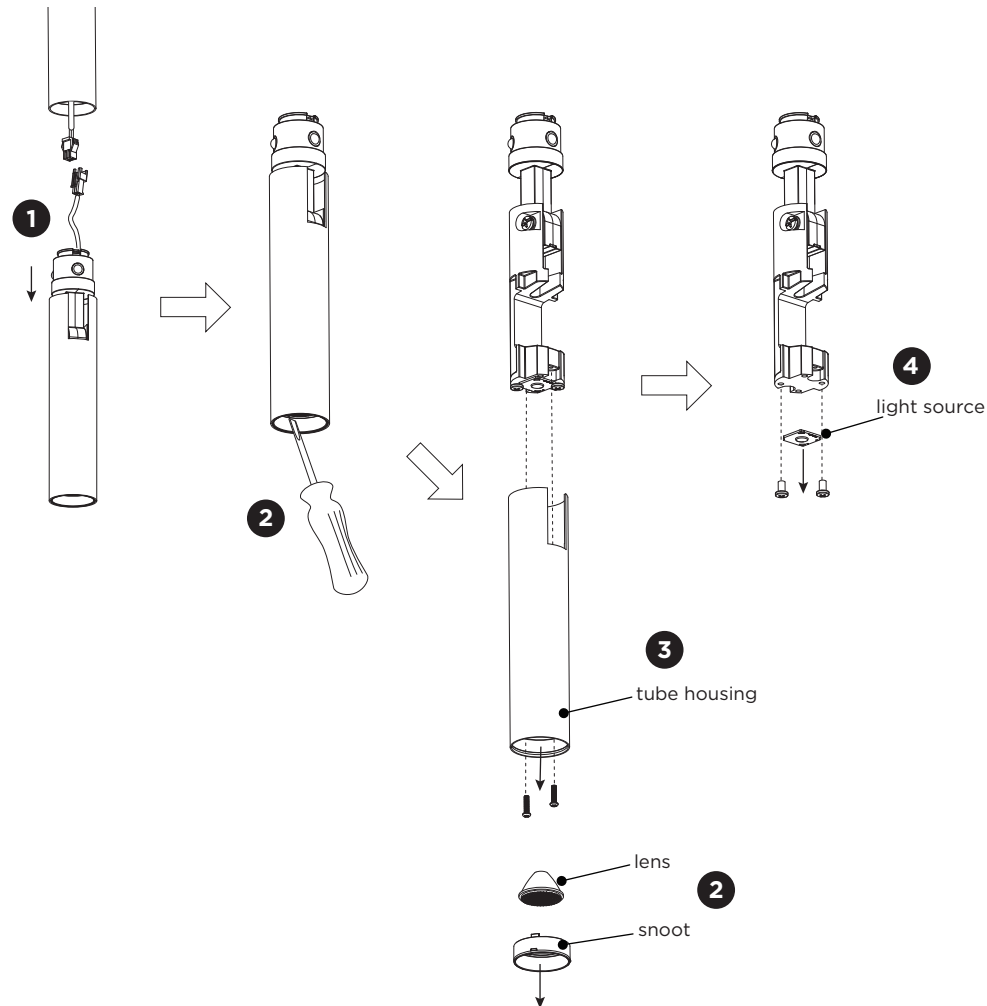
INSTALLATION INSTRUCTIONS | DECEMBER 2024

How to cut the stick to the desired length:



MATCH stick TRIMLESS

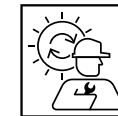
INSTALLATION INSTRUCTIONS | DECEMBER 2024



DISMOUNTING AND RECYCLING INSTRUCTIONS

Light source

- 1** Remove the fixture from the stick by pulling and loosen the connector.
- 2** Take out the snoot using any available tools and remove the lens.
- 3** Unscrew the screws and remove the tube housing.
- 4** Unscrew the light source and loosen the wires to remove the light source.



The light source is replaceable by Wever & Ducré or by a professional with explicit authorisation. For more information please contact your local Wever & Ducré customer service point.



This luminaire contains a light source with the energy class E.