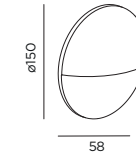


DIMENSIONS

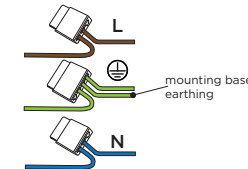


MOUNTING INSTRUCTION

- 1 Remove the mounting base by loosening the socket screws and fix it to the wall with screws (screws are not included).

2 POWER CONNECTION

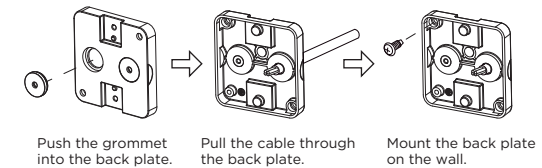
Connect to 220-240V.



Connect the earth cable.



Always use a matching grommet based on the used 220-240V cable and the corresponding type in the overview table. for example:

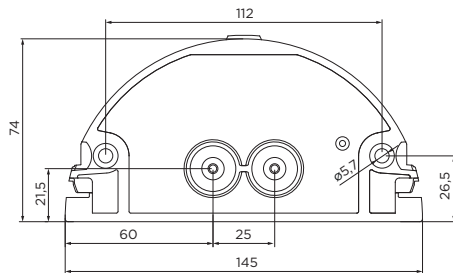


- 3 Fit the housing to the mounting base and push it down to secure it.
- 4 Fix the socket screws.

Always use a matching grommet in the overview table.

	A	B	C
use pin to make hole, not a knife			
CABLE			
TYPE	ROUND H05RN-F H07RN8-F H07RN-F	ROUND H05RN-F	ROUND
OUTSIDE Ø	min 6.8mm max 8.9mm	min 5mm max 6.8mm	min 1.5mm max 2.6mm
CONDUCTION SECTION	2or3x 0.75mm ² 2or3x 1.0mm ² 2or3x 1.5mm ²	2or3x 0.75mm ² 2x 1.0mm ²	0.75mm ² 1.5mm ²

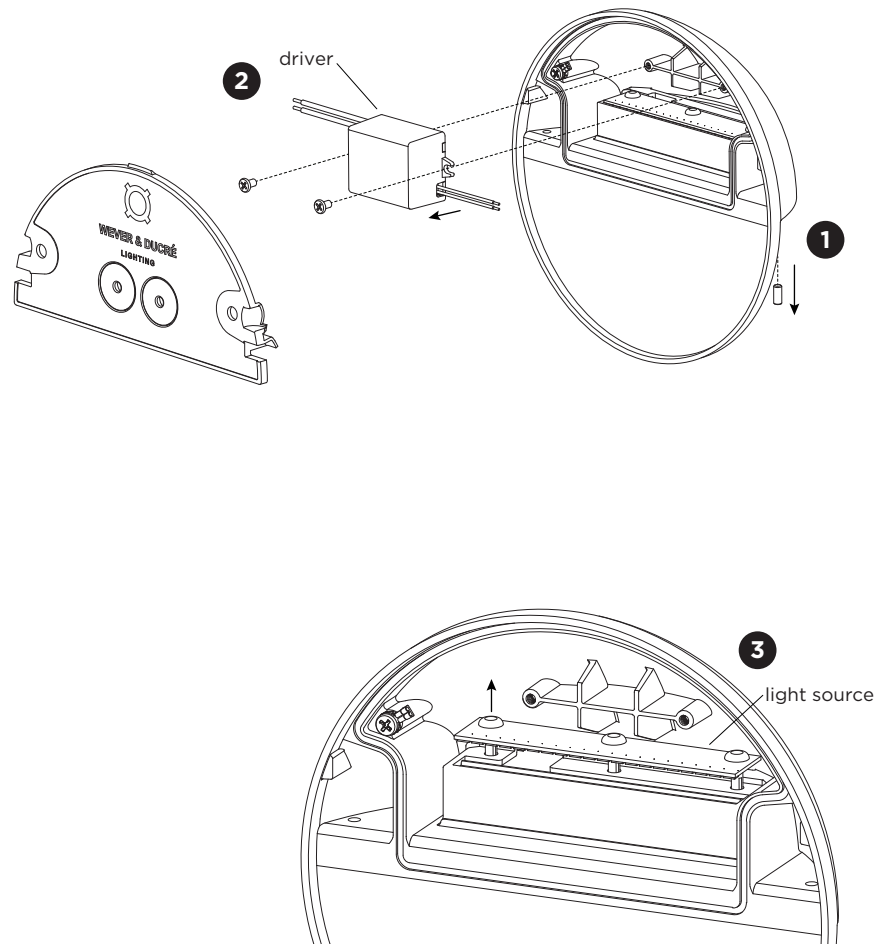
Mounting base:



WEVER & DUCRÉ
LIGHTING

WEVER & DUCRÉ BV

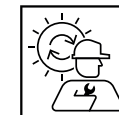
Spinnerijstraat 99/21, 8500 Kortrijk, Belgium
weverducre.com



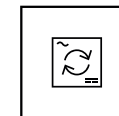
DISMOUNTING AND RECYCLING INSTRUCTIONS

Light source & driver

- 1 Dismount the fixture from the mounting base by loosening the socket screws and sliding it upwards to unlock.
- 2 Disconnect the wires and unscrew the driver to remove it.
- 3 Loosen the wires and remove the light source by pulling up.



The light source is replaceable by Wever & Ducré or by a professional with explicit authorisation. For more information please contact your local Wever & Ducré customer service point.



The driver can be replaced by the end user.



This luminaire contains a light source with the energy class XX.



Use green electricity to light up your luminaire.