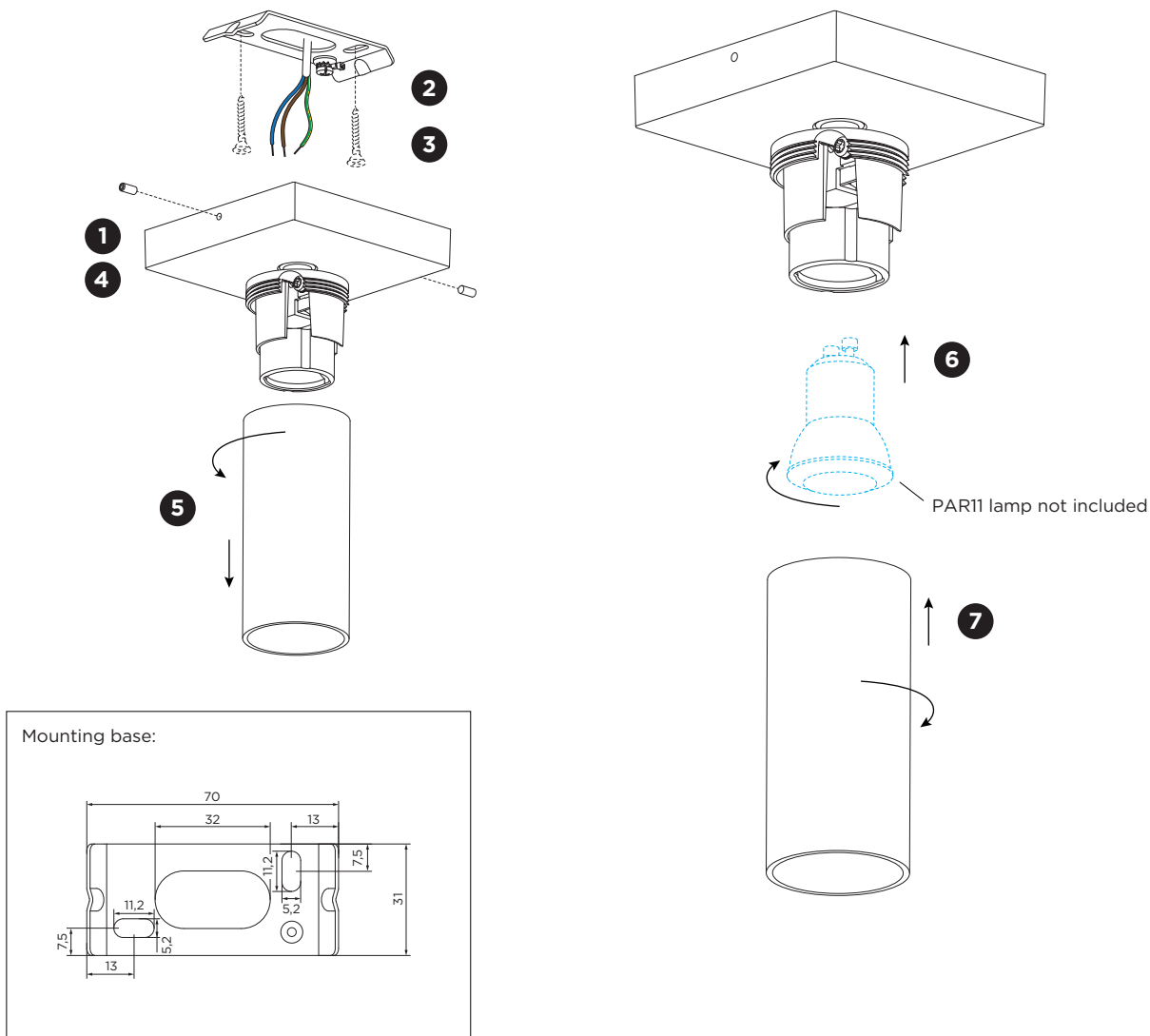
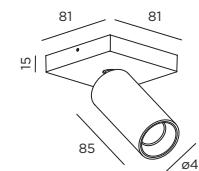


SCOOPA

INSTALLATION INSTRUCTIONS | APRIL 2025



DIMENSIONS



MOUNTING INSTRUCTION

- 1 Remove the mounting base from the fixture by loosening the socket screws.
- 2 Mount the base on the ceiling with screws (screws are not included).
- 3 **POWER CONNECTION**
Connect to 220-240V.
Connect the earth cable.
- 4 Fix the luminaire on the base with the socket screws.
- 5 Unscrew the tube from the lamp base.
- 6 Insert the lamp in the socket (not included).
- 7 Mount the tube back again.

