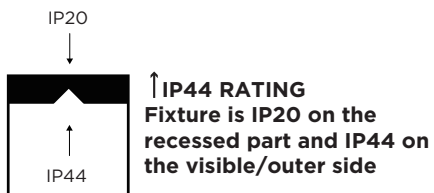
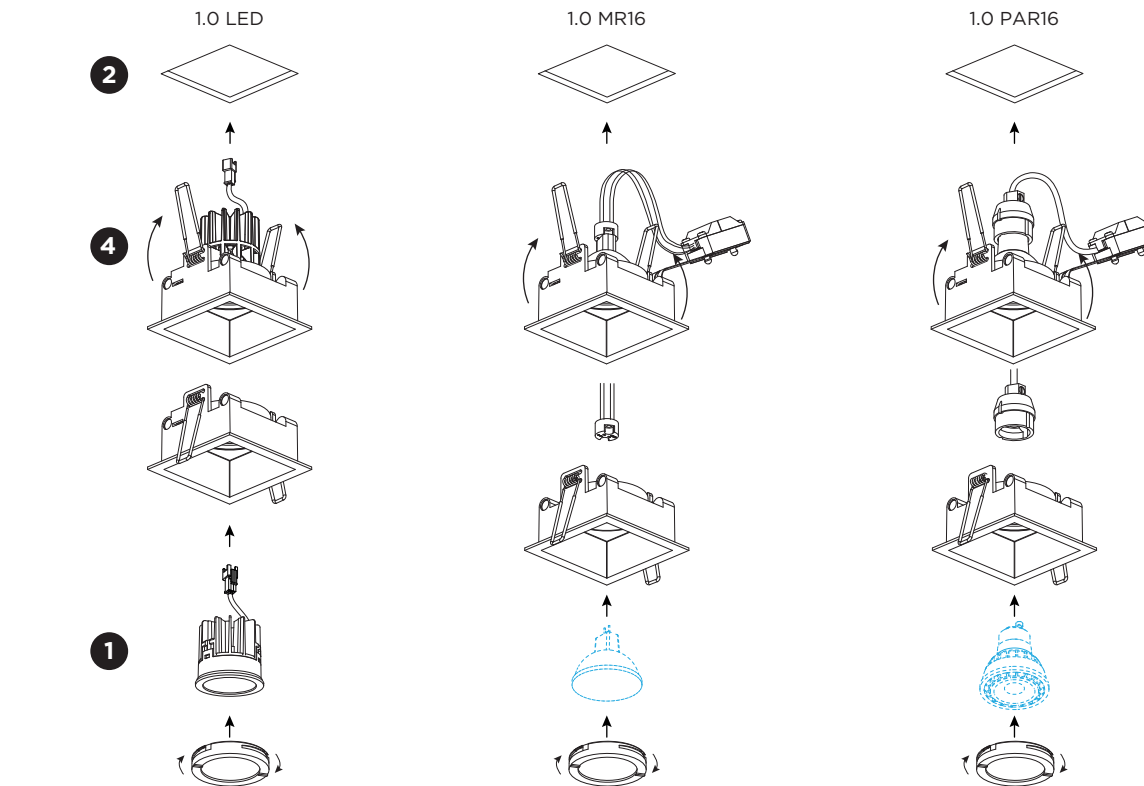


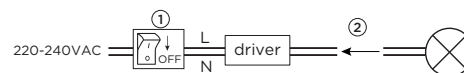
PLANO IP44

INSTALLATION INSTRUCTIONS | JUNE 2025



Driver must be powered off before connecting the cables.

Before connecting the luminaire/LED module to the driver please make sure the driver is not powered but disconnected from the mains. The driver can only be powered when the luminaire/LED module is already connected. Disregarding this instruction might damage or even destroy the luminaire/LED module.



DIMENSIONS

1.0 LED		
1.0 MR16		
1.0 PAR16		

MOUNTING INSTRUCTION

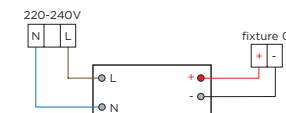
1 Put the LED module or the bulb in the lamp ring and mount the ring into the housing to fix it by turning it clockwise.

2 Make a hole in the ceiling according to the prescribed dimensions.

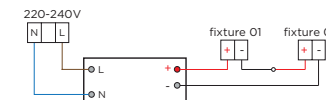
3 POWER CONNECTION

LED Always use a driver according to the specifications of the LED module.

Single connection



Multiple connection

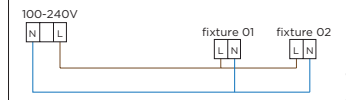


PAR16

Single connection



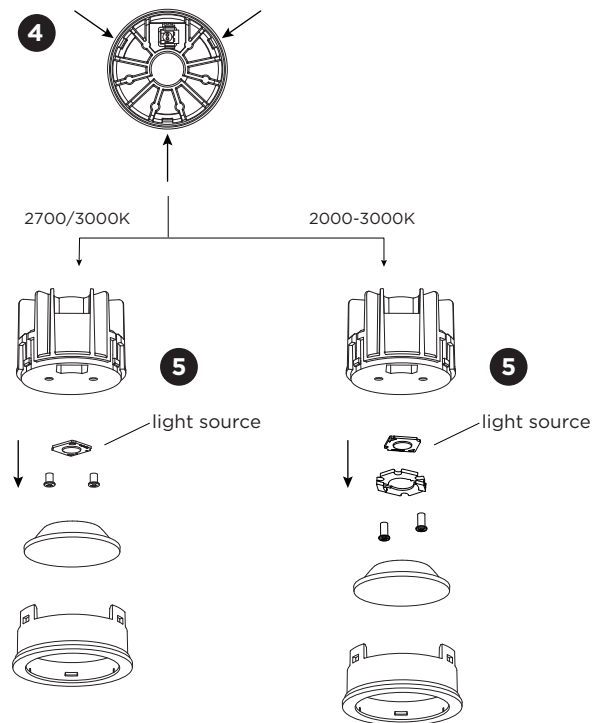
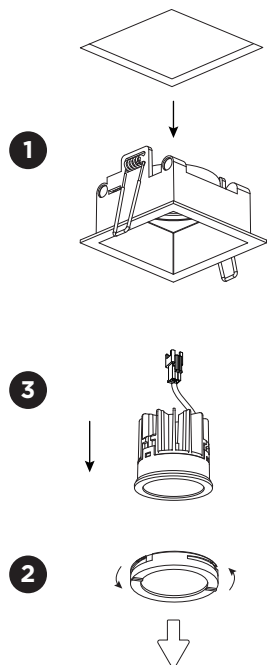
Multiple connection



4 Push the springs upwards and insert the fixture in the ceiling hole.

PLANO IP44

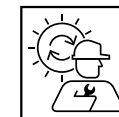
INSTALLATION INSTRUCTIONS | JUNE 2025



DISMOUNTING AND RECYCLING INSTRUCTIONS

Light source

- 1 Take the luminaire out of the ceiling hole and unplug the connector.
- 2 Hold and turn the lamp ring counterclockwise to remove it.
- 3 Remove the LED module.
- 4 Push at the three points to loosen the front ring.
- 5 Take out the lens and unscrew the light source to remove it.



The light source is replaceable by Wever & Ducré or by a professional with explicit authorisation. For more information please contact your local Wever & Ducré customer service point.



This luminaire contains a light source with the energy class D.



Use green electricity to light up your luminaire.