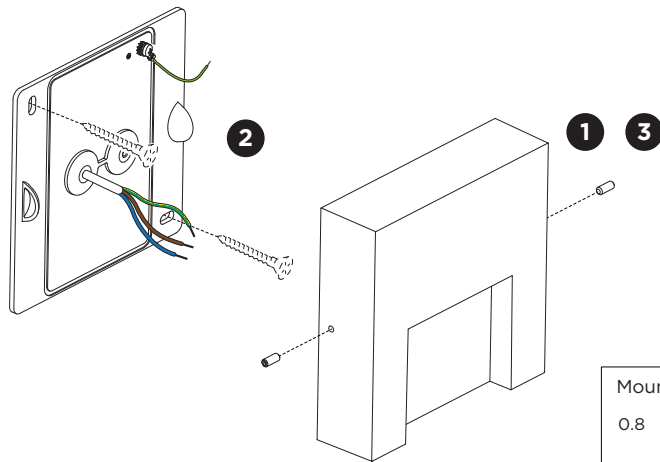


RETO wall surface

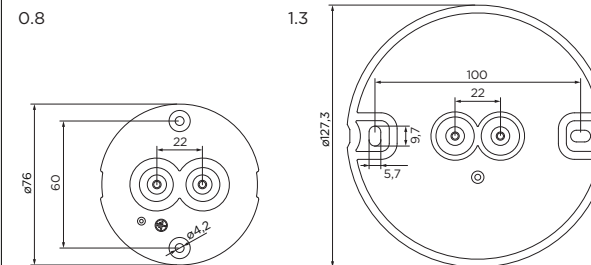
INSTALLATION INSTRUCTIONS | FEBRUARY 2025



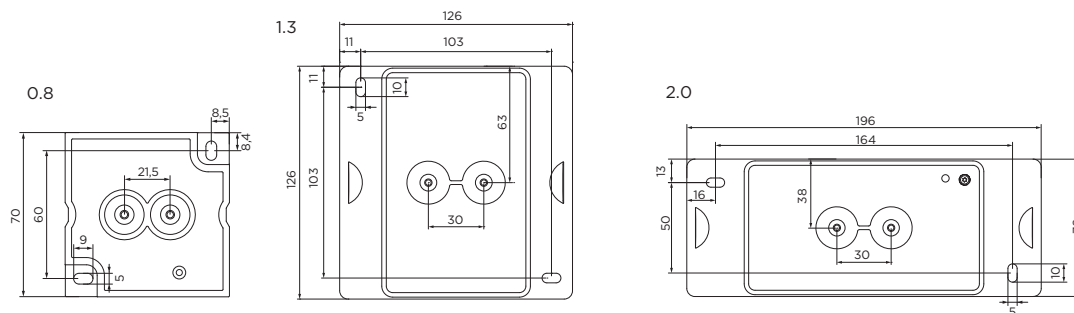
Always use a matching grommet in the overview table.

	A	B	C
CABLE			
TYPE	ROUND H05RN-F H07RN8-F H07RN-F	ROUND H05RN-F	ROUND
OUTSIDE Ø	min 6.8mm max 8.9mm	min 5mm max 6.8mm	min 1.5mm max 2.6mm
CONDUCTION SECTION	2or3x 0.75mm ² 2or3x 1.0mm ² 2or3x 1.5mm ²	2or3x 0.75mm ² 2x 1.0mm ²	0.75mm ² 1.5mm ²

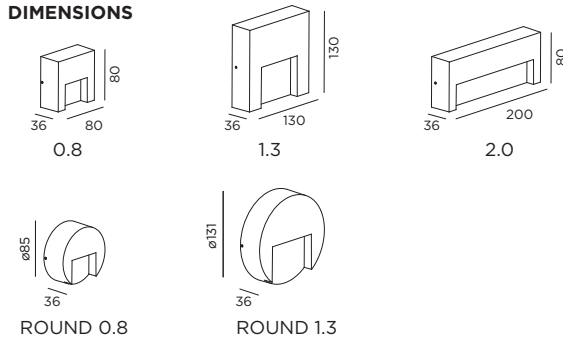
Mounting base round:



Mounting base square:



DIMENSIONS

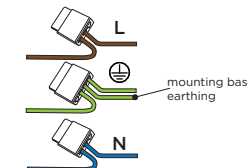


MOUNTING INSTRUCTION

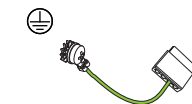
- 1 Remove the mounting base from the luminaire by loosening the socket screws and mount it on the wall with screws (screws are not included).

POWER CONNECTION

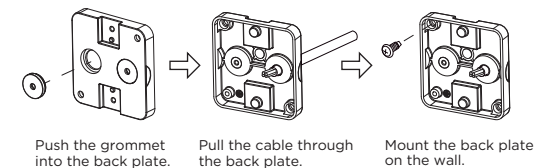
Connect to 220-240V.



Connect the earth cable.



Always use a matching grommet based on the used 220-240V cable and the corresponding type in the overview table.



- 3 Fix the luminaire on the base with the socket screws.



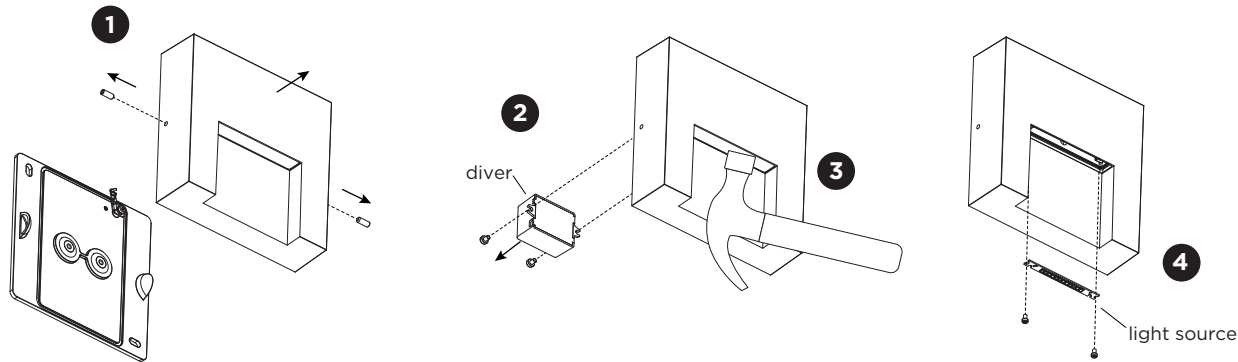
WEVER & DUCRÉ
LIGHTING

WEVER & DUCRÉ BV

Spinnerijstraat 99/21, 8500 Kortrijk, Belgium
weverducre.com

RETO wall surface

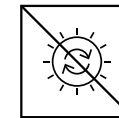
INSTALLATION INSTRUCTIONS | FEBRUARY 2025



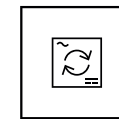
DISMOUNTING AND RECYCLING INSTRUCTIONS

Light source & driver

- 1 Loosen the side screws and disconnect the wires to remove the lamp housing from the mounting base.
- 2 Loosen the screws and disconnect the wires to remove the driver.
- 3 Break the glass.
- 4 Unscrew the light source, disconnect the wires and remove the light source.



The light source is not replaceable.



The driver can be replaced by the end user.

This luminaire contains a light source with the corresponding energy class:

Version	Energy class
RETO 1.3 RETO 2.0 RETO ROUND 1.3	A ↑ G E
RETO 0.8 RETO ROUND 0.8	A ↑ G G



Use green electricity to light up your luminaire.

