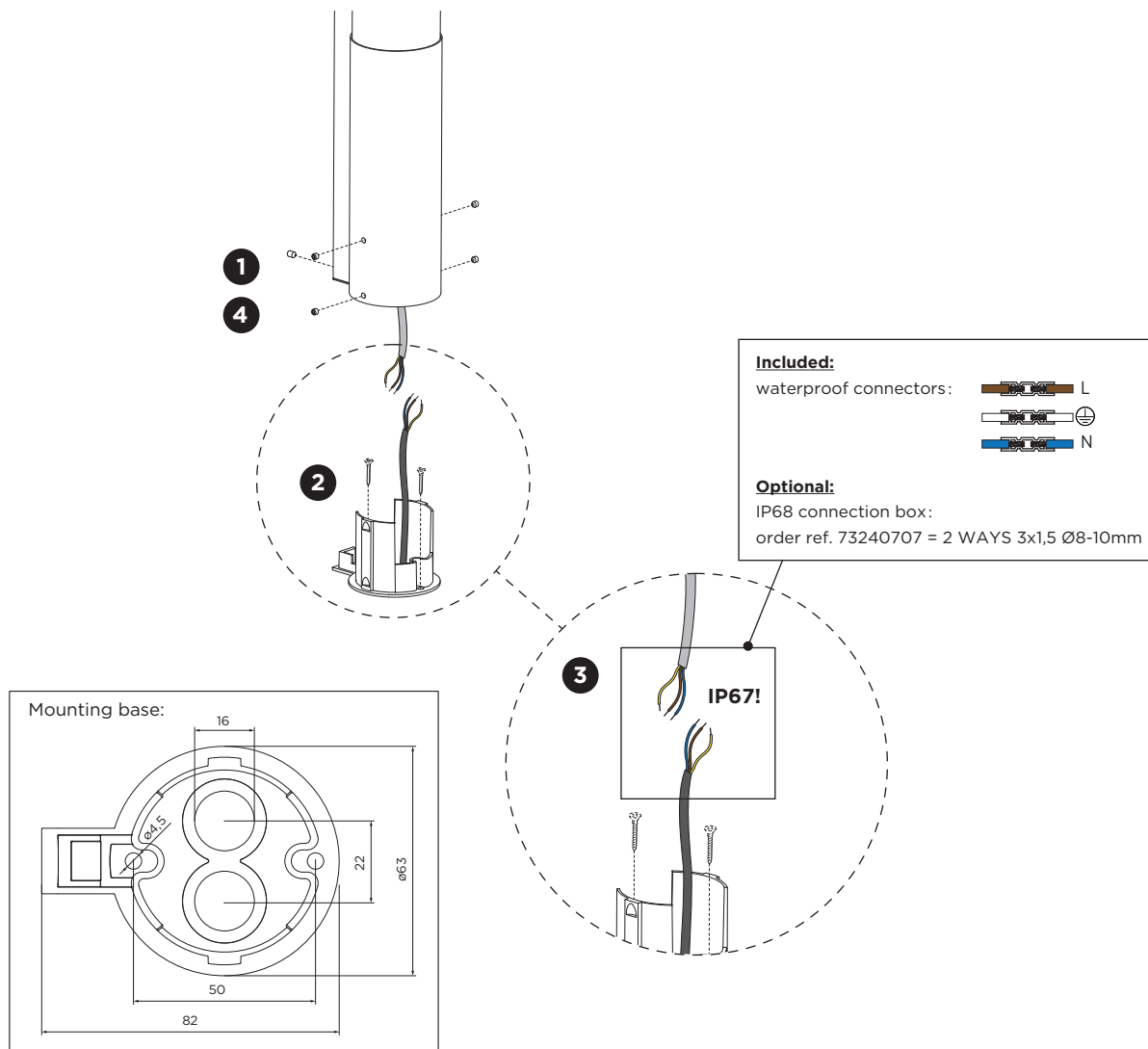
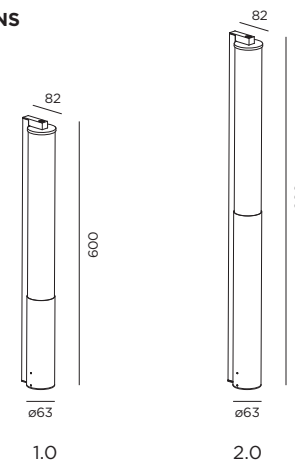


RIBELLE floor

INSTALLATION INSTRUCTIONS | MARCH 2025



DIMENSIONS



MOUNTING INSTRUCTION

- 1** Remove the mounting base from the fixture by loosening the socket screws.
- 2** Mount the base on the floor with screws (screws are not included).
- 3 POWER CONNECTION**
Connect to 220-240V. Connect the wires with the waterproof connectors. Please see the detailed method in the separate instruction sheet of the waterproof connection.
- 4** Fix the luminaire on the base with the socket screws.



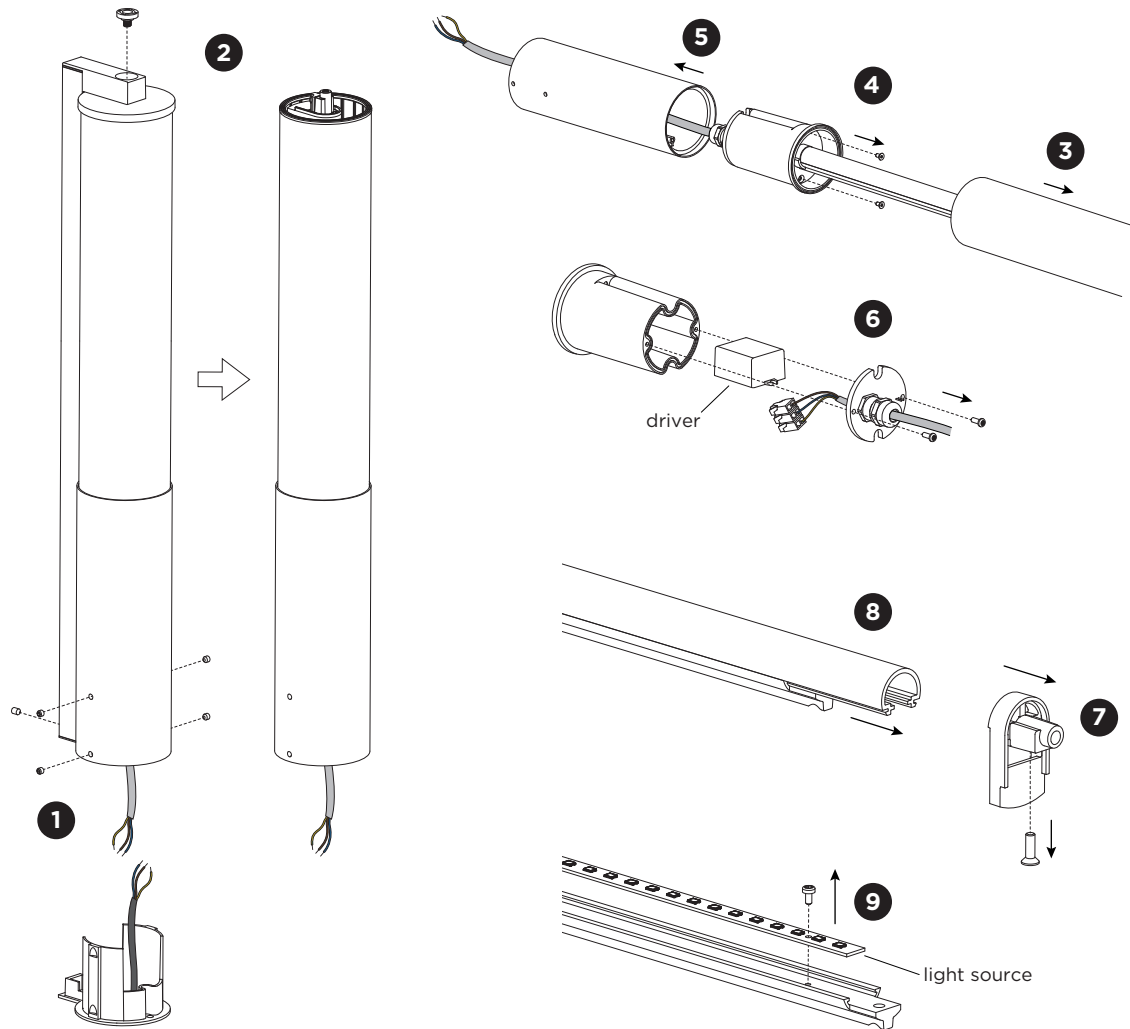
WEVER & DUCRÉ
LIGHTING

WEVER & DUCRÉ BV

Spinnerijstraat 99/21, 8500 Kortrijk, Belgium
weverducre.com

RIBELLE floor

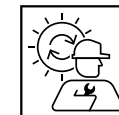
INSTALLATION INSTRUCTIONS | MARCH 2025



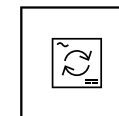
DISMOUNTING AND RECYCLING INSTRUCTIONS

Light source & driver

- 1 Dismount the fixture from the base by removing the socket screws and disconnecting the wires.
- 2 Loosen the top screw and take off the fixture from the profile.
- 3 Pull off the glass tube.
- 4 Loosen the screws.
- 5 Remove the tube from the driver housing.
- 6 Unscrew the plate and disconnect the wires to remove the driver.
- 7 Remove the fixation part by unscrewing it.
- 8 Pull off the plastic cover.
- 9 Unscrew the light source to remove it.



The light source is replaceable by Wever & Ducré or by a professional with explicit authorisation. For more information please contact your local Wever & Ducré customer service point.



The driver can be replaced by the end user.



This luminaire contains a light source with the energy class E.



Use green electricity to light up your luminaire.



WEVER & DUCRÉ
LIGHTING

WEVER & DUCRÉ BV

Spinnerijstraat 99/21, 8500 Kortrijk, Belgium
weverducre.com