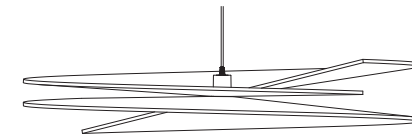
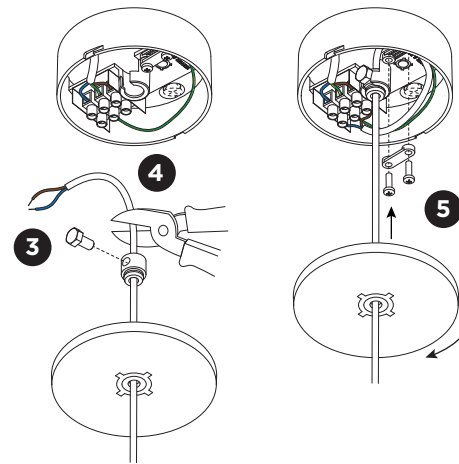
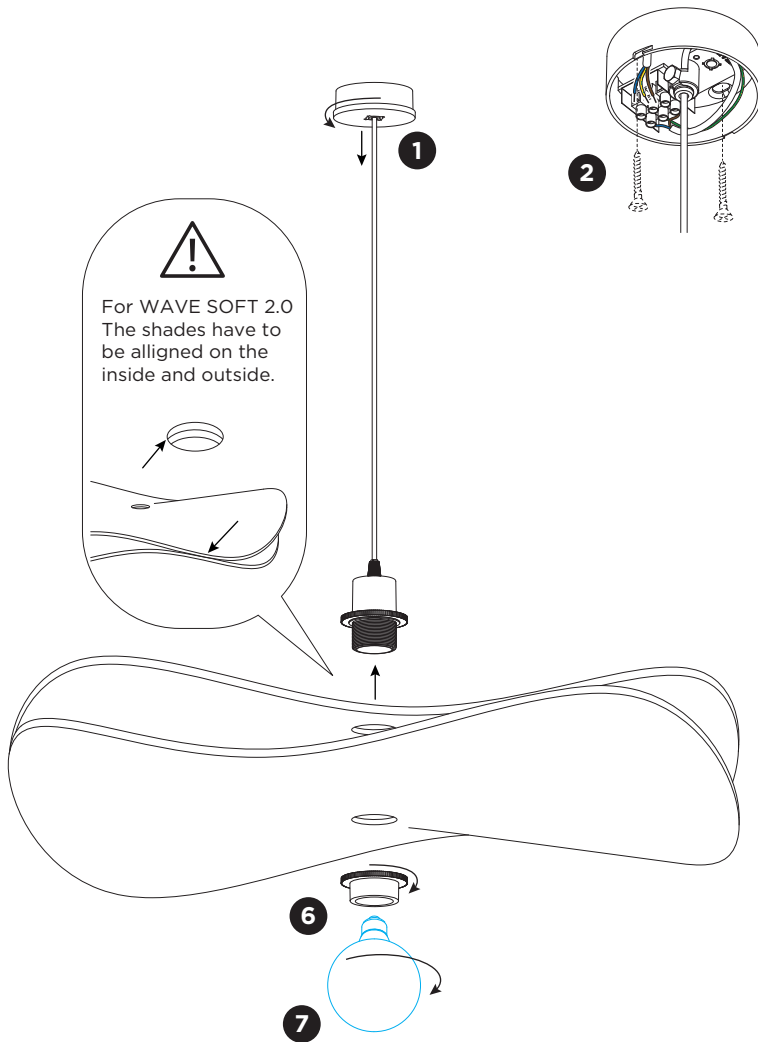


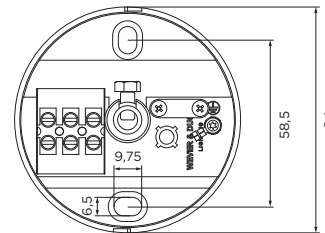
WAVE SOFT / SPIRRA SOFT

INSTALLATION INSTRUCTIONS | APRIL 2025

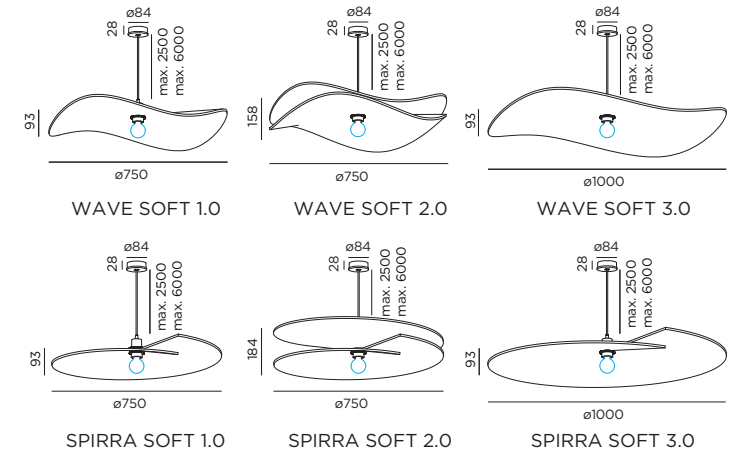


! For SPIRRA SOFT 2.0
The shades have to be placed
mirrored from each other.

Ceiling base dimensions



DIMENSIONS



MOUNTING INSTRUCTION

- 1 Turn the cover a quarter counterclockwise to remove it from the ceiling base.
- 2 Mount the base on the ceiling with screws (screws are not included).
- 3 Optional: shorten the cable to your required length and place the strain relief in the strain relief holder.
The power must be switched off before disconnecting and connecting the cables.
- 4 **POWER CONNECTION**
Connect to 220-240V.
- 5 Fix the strain relief and mount the cover back to the base by aligning the clamps in the slots and turning it a quarter clockwise.
- 6 Unscrew the lower ring from the luminaire body, put the shade(s) on the body and screw the lower ring back on.
- 7 Install a bulb (bulb is not included).



WEVER & DUCRÉ
LIGHTING

WEVER & DUCRÉ BV
Spinnerijstraat 99/21, 8500 Kortrijk, Belgium
weverducre.com