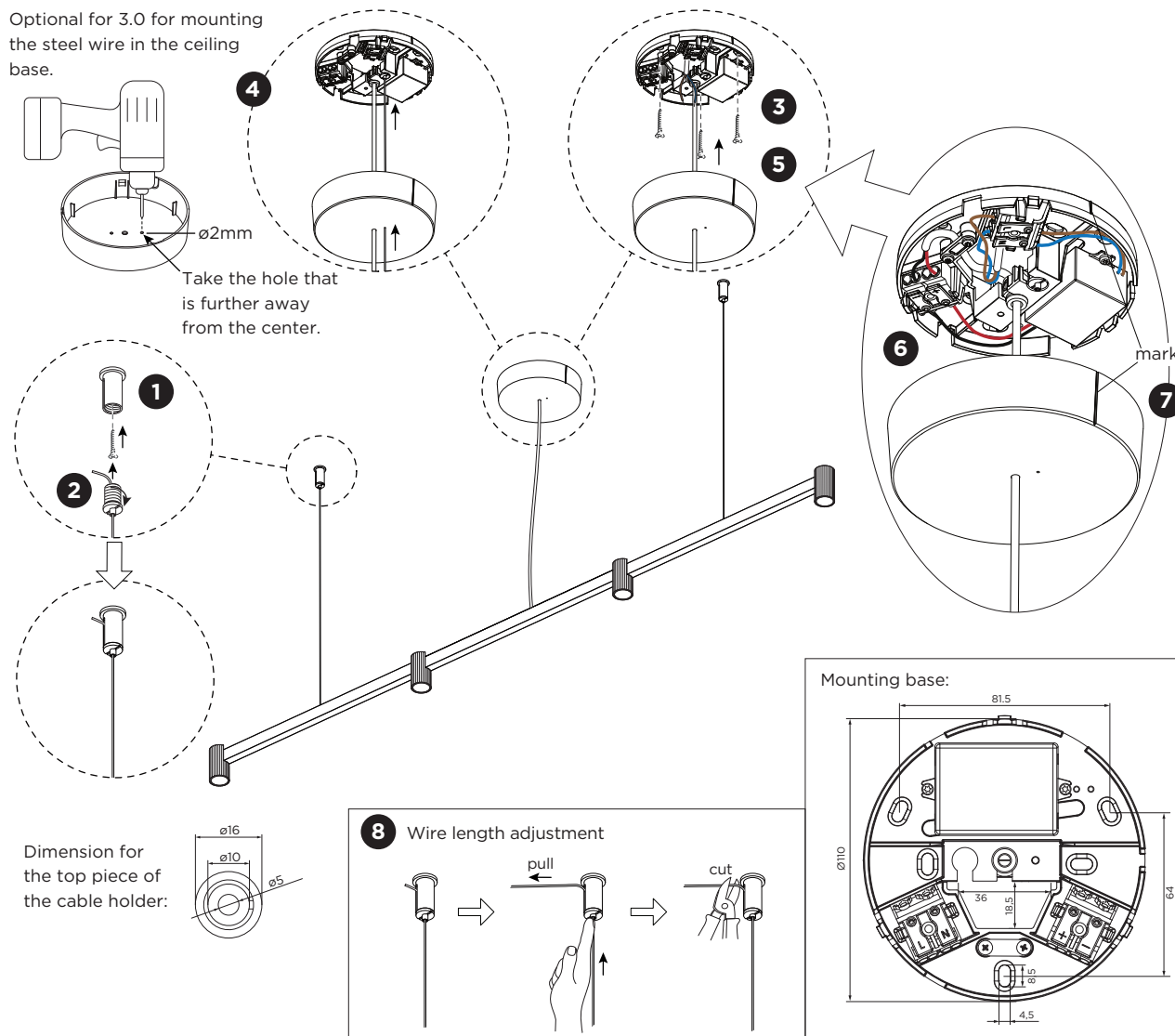


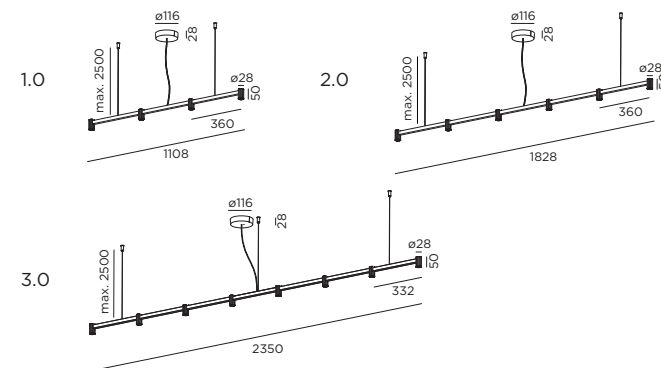
TRACE CHANDELIER SUSPENDED

INSTALLATION INSTRUCTIONS | DECEMBER 2024

Optional for 3.0 for mounting the steel wire in the ceiling base.

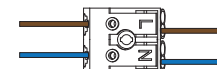


DIMENSIONS



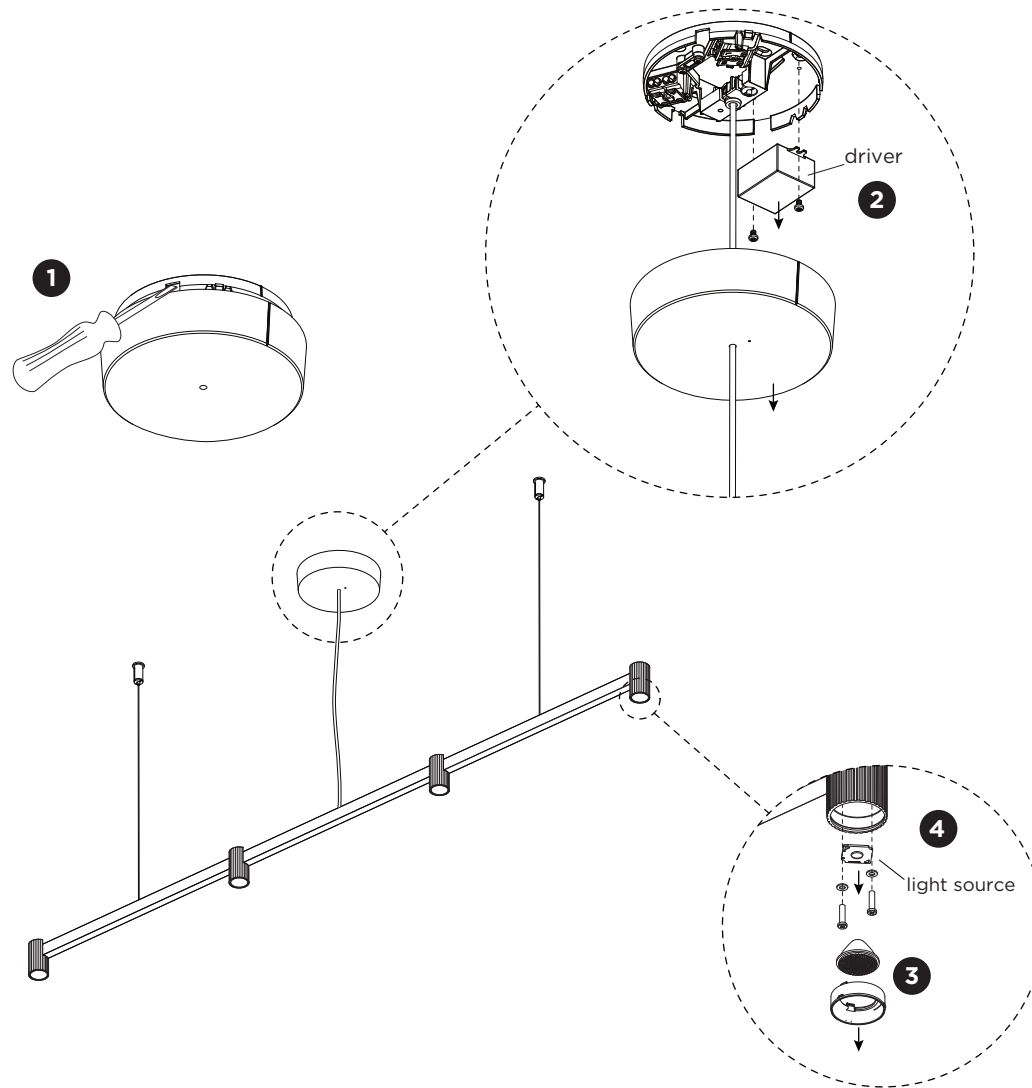
MOUNTING INSTRUCTION

- 1 Screw out the top pieces of the cable holders and fix them on the ceiling with screws (screws are not included).
- 2 Screw the cable holders back to the top piece.
- 3 Remove the cover of the mounting base by pulling and mount the base on the ceiling with screws (screws are not included).
- 4 Optional for 3.0: for mounting the steel wire in the ceiling base drill a hole in the cover and pull the steel wire through the wire locker.
- 5 Optional: shorten the cable to your required length. The driver must be powered off before disconnecting and connecting the cables.
- 6 **POWER CONNECTION**
Connect to 220-240V.
- 7 Align the marks on both of the mounting base and the cover. Push the cover on the mounting base until it clicks.
- 8 Adjust the steel wires to the required length.



TRACE CHANDELIER SUSPENDED

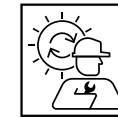
INSTALLATION INSTRUCTIONS | DECEMBER 2024



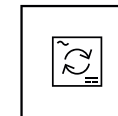
DISMOUNTING AND RECYCLING INSTRUCTIONS

Light source & driver

- 1 Remove the lid from the mounting base by placing a flat tool into the gap and pushing it down.
- 2 Disconnect the wires and unscrew the driver to remove it.
- 3 Pull out the fixing ring(s) and remove the lens(es).
- 4 Unscrew the screws, disconnect the wires and remove the light source(s).



The light source is replaceable by Wever & Ducré or by a professional with explicit authorisation. For more information please contact your local Wever & Ducré customer service point.



The driver can be replaced by the end user.



This luminaire contains a light source with the energy class E.