

06 Downlights Fixed LED>The Budget Downlight Range Aluminium

10107T/W/C



7W SMD LED recessed downlight, budget range, IP20.

Complete with 280mA driver.

Complies with standard EN60598-1 and any other specific standards.



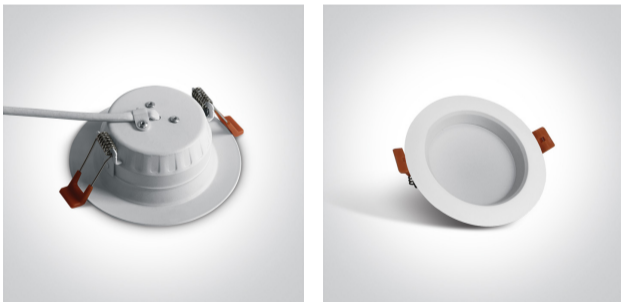
Downloads



Dimensions



Gallery






Physical Specification

Item Group	06 Downlights Fixed LED
Family	The Budget Downlight Range Aluminium
Order Code	10107T/W/C
Colour	White
Material	Aluminium
Shape	Circular
Height	42mm


Diameter	116mm
Cutout Hole Diameter	85mm
Recessed Ceiling	Yes
Depth Required	60mm
Indoor	Yes
Adjustable	No

Electrical Characteristics


Gear	External-Included
Fitting + Driver	
Input Voltage	220-240V
50 Hz	Yes
60 Hz	Yes
Safety Class	
Power(Watts)	7W
IP Rating	IP20
Light Source	LED built in
Dimmable	No
F Mark	

Fitting	
Input Type	Constant Current
Input Current	280mA
Voltage	21V
Safety Class	
Power(Watts)	5,9W
IP Rating	IP20
Light Source	LED built in
LED Type	SMD 2835
LED Brand	Sanan

Gear

Gear Type	Led Driver
Input Voltage	220-240V
50 Hz	Yes
60 Hz	Yes
Power(Watts)	4,2-7W
Power Factor	0,5
Constant Current	Yes
Output	280mA
Voltage Range	15-25V
IP Rating	IP20
Safety Class	
Dimmable	No
Housing Material	Plastic
Output Terminal	Cable
Brand	Kegu

Illumination Data

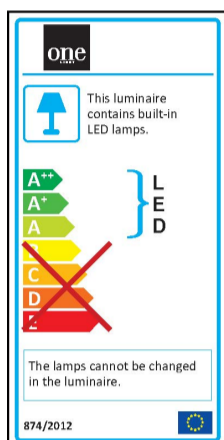
Colour Temperature	4000K
Lumen Output	520lm
Light Efficiency	74,3lm/W
CRI	80
Beam Angle	120°
Illumination Diagram	

Packing Info

Box Length	12cm
Box Width	12cm

Box Height	6cm
Box Weight	0,190kg
Pcs/Carton	60
Barcode	5291889045786
HS Code	9405409900

Energy Label



Certification & Warranty

Warranty

2 Years

Weee Directive

Yes

switch to
one light!

one
LIGHT

