

## 06 Downlights Fixed LED > UGR19 Adjustable CCT Range

# 10113UV/W



13W SMD LED UGR19 downlight with adjustable CCT, IP44.

Complete with 300mA driver.

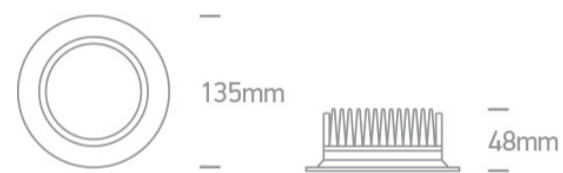
Complies with standard EN60598-1 and any other specific standards.



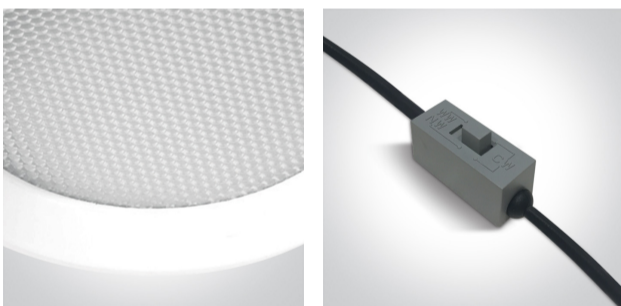
### Downloads



### Dimensions



### Gallery






### Physical Specification

Item Group	06 Downlights Fixed LED
Family	UGR19 Adjustable CCT Range
Order Code	10113UV/W
Colour	White
Material	Die Cast
Shape	Circular
Height	40mm

Diameter	135mm
Cutout Hole Diameter	120mm
Recessed Ceiling	Yes
Depth Required	70mm
Indoor	Yes
Adjustable	No

## Electrical Characteristics

Gear	External-Included
Fitting + Driver	
Input Voltage	220-240V
50 Hz	Yes
60 Hz	Yes
Safety Class	
Power(Watts)	13W
IP Rating	IP44
Light Source	LED built in
Dimmable	No
F Mark	

Fitting	
Input Type	Constant Current
Input Current	300mA
Voltage	38V
Safety Class	
Power(Watts)	6,84W
IP Rating	IP44
Light Source	LED built in
LED Type	SMD 2835
LED Brand	Epistar

## Gear

Gear Type

Led Driver

Input Voltage

220-240V

50 Hz

Yes

60 Hz

Yes

Power(Watts)

8,3-12,6W

Power Factor

0,9

Constant Current

Yes

300mA

25-42V

IP Rating

IP44

Safety Class



Dimmable

No

Housing Material

Plastic

Output Terminal

Cable

Brand

Lifud

Protection

Short Circuit and Overload

## Illumination Data

Colour Temperature

3000K-4000K-6000K

Lumen Output

975lm

Light Efficiency

75lm/W

CRI

80

Illumination Diagram



UGR

19

## Packing Info

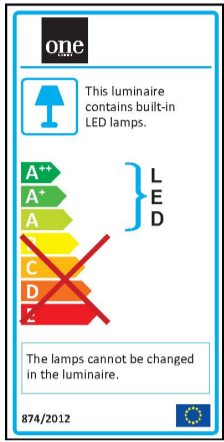
Pcs/Carton

20

Barcode

5291889065302

Energy Label



Certification & Warranty

Warranty

3 Years

Average Lifetime

30000hrs

Weee Directive

Yes

switch to  
**one light!**

