

06 Downlights Fixed LED > UGR19 Adjustable CCT Range

10120UV/W



20W SMD LED UGR19 downlight with adjustable CCT, IP44.

Complete with 550mA driver.

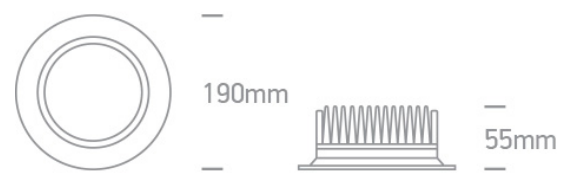
Complies with standard EN60598-1 and any other specific standards.



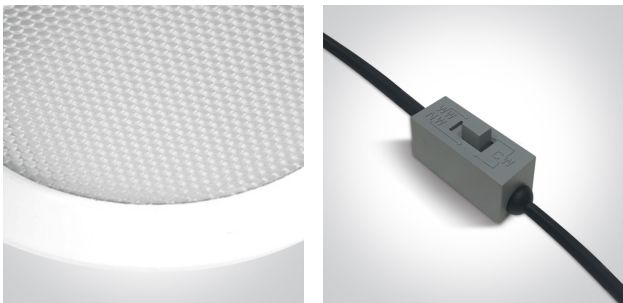
Downloads



Dimensions



Gallery






Physical Specification

Item Group	06 Downlights Fixed LED
Family	UGR19 Adjustable CCT Range
Order Code	10120UV/W
Colour	White
Material	Die Cast
Shape	Circular
Height	55mm

Diameter	190mm
Cutout Hole Diameter	170mm
Recessed Ceiling	Yes
Depth Required	75mm
Indoor	Yes
Adjustable	No

Electrical Characteristics

Gear	External-Included
Fitting + Driver	
Input Voltage	220-240V
50 Hz	Yes
60 Hz	Yes
Safety Class	
Power(Watts)	20W
IP Rating	IP44
Light Source	LED built in
Dimmable	No
F Mark	

Fitting	
Input Type	Constant Current
Input Current	550mA
Voltage	36V
Safety Class	
Power(Watts)	19,8W
IP Rating	IP44
Light Source	LED built in
LED Type	SMD 2835
LED Brand	Epistar

Gear

Gear Type

Led Driver

Input Voltage

220-240V

50 Hz

Yes

60 Hz

Yes

Power(Watts)

13,75-22W

Power Factor

0,9

Constant Current

Yes

550mA

25-40V

IP Rating

IP44

Safety Class



Dimmable

No

Housing Material

Plastic

Output Terminal

Cable

Brand

Lifud

Protection

Short Circuit and Overload

Illumination Data

Colour Temperature

3000K-4000K-6000K

Lumen Output

1500lm

Light Efficiency

75lm/W

CRI

80

Illumination Diagram



UGR

19

Packing Info

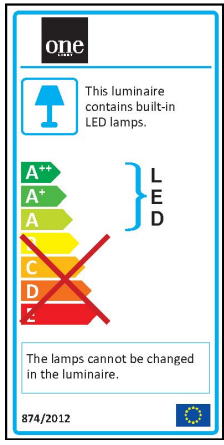
Pcs/Carton

20

Barcode

5291889065319

Energy Label



Certification & Warranty

Warranty

3 Years

Average Lifetime

30000hrs

Weee Directive

Yes

switch to
one light!

