

04 Recessed Spots Adjustable LED>The Trimless COB Spot Die cast

11107BT/W/W



7W COB LED recessed trimless adjustable spot, suitable for indoor/outdoor applications, IP54.

Requires 700mA constant current LED driver.

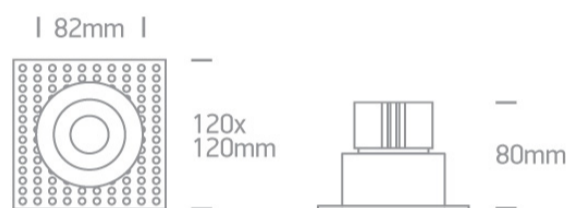
Complies with standard EN60598-1 and any other specific standards.



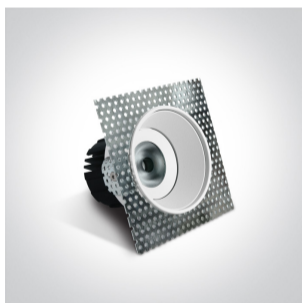
Downloads



Dimensions



Gallery



Must be ordered separately



89015A

Related items



89015AT

Physical Specification

Item Group	04 Recessed Spots Adjustable LED
Family	The Trimless COB Spot Die cast
Order Code	11107BT/W/W
Colour	White
Material	Die Cast
Shape	Rectangular
Length	120mm
Width	120mm
Height	80mm
Cutout Hole Diameter	96mm
Recessed trimless ceiling	Yes
Depth Required	105mm
Indoor	Yes
Outdoor	Yes
Adjustable	2 Directions

Electrical Characteristics

Fitting	
Input Type	Constant Current
Input Current	700mA
Voltage	10V
Safety Class	III
Power(Watts)	7W

IP Rating
Light Source
LED Type
LED Brand
LED Number
Cable Length
F Mark

IP54
LED built in
COB
Bridgelux
1
40cm


Illumination Data

Colour Temperature
Lumen Output
Light Efficiency
CRI
Beam Angle
Illumination Diagram
Dark Light

3000K
500lm
71,42lm/W
90
38°

Yes

Packing Info

Box Length
Box Width
Box Height
Box Weight
Pcs/Carton
Barcode
HS Code

13cm
13cm
8cm
0,45Kg
30
5291889046998
9405409900

Warranty

3 Years

Average Lifetime

40000hours

Weee Directive

Yes

switch to
one light!

one
LIGHT

