

08 Downlights Adjustable LED>The COB Pop Out Range Aluminium

## 11125R/W/W



25W LED adjustable COB Pop Out Range, IP20.

Requires 700mA driver.

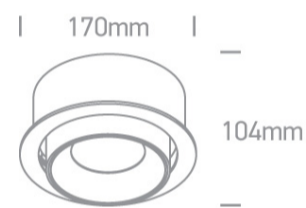
Complies with standard EN60598-1 and any other specific standards.



### Downloads



### Dimensions



### Gallery

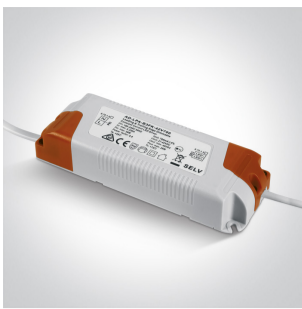


### Must be ordered separately



89030A

## Related items



89030AT


## Physical Specification

|                      |                                 |
|----------------------|---------------------------------|
| Item Group           | 08 Downlights Adjustable LED    |
| Family               | The COB Pop Out Range Aluminium |
| Order Code           | 11125R/W/W                      |
| Colour               | White                           |
| Material             | Aluminium                       |
| Shape                | Circular                        |
| Height               | 104mm                           |
| Diameter             | 170mm                           |
| Cutout Hole Diameter | 160mm                           |
| Recessed Ceiling     | Yes                             |
| Depth Required       | 85mm                            |
| Indoor               | Yes                             |
| Adjustable           | 2 Directions                    |

## Electrical Characteristics

|               |                  |
|---------------|------------------|
| Fitting       |                  |
| Input Type    | Constant Current |
| Input Current | 700mA            |
| Safety Class  | III              |
| Power(Watts)  | 25W              |
| IP Rating     | IP20             |
| Light Source  | LED built in     |
| LED Type      | COB              |

|              |  |
|--------------|--|
| LED Brand    |  |
| Cable Length |  |
| F Mark       |  |

|   |
|---|
| Bridgelux   |
| 40cm  |
|  |

### Illumination Data

|                      |  |
|----------------------|--|
| Colour Temperature   |  |
| Lumen Output         |  |
| Light Efficiency     |  |
| CRI                  |  |
| Beam Angle           |  |
| Illumination Diagram |  |

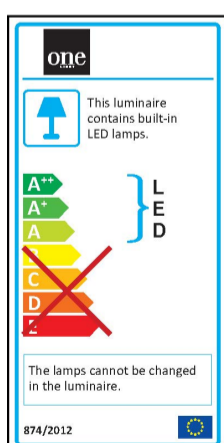
|   |
|---|
| 3000K   |
| 2070lm  |
| 82,8lm/W  |
| 80  |
| 40°   |
|  |

### Packing Info

|            |  |
|------------|--|
| Box Length |  |
| Box Width  |  |
| Box Height |  |
| Box Weight |  |
| Pcs/Carton |  |
| Barcode    |  |
| HS Code    |  |

|               |
|---------------|
| 22cm          |
| 22cm          |
| 16cm          |
| 1,75Kg        |
| 8             |
| 5291889046981 |
| 9405409900    |

### Energy Label



Warranty

3 Years

Weee Directive

Yes

switch to  
**one light!**

one  
LIGHT

