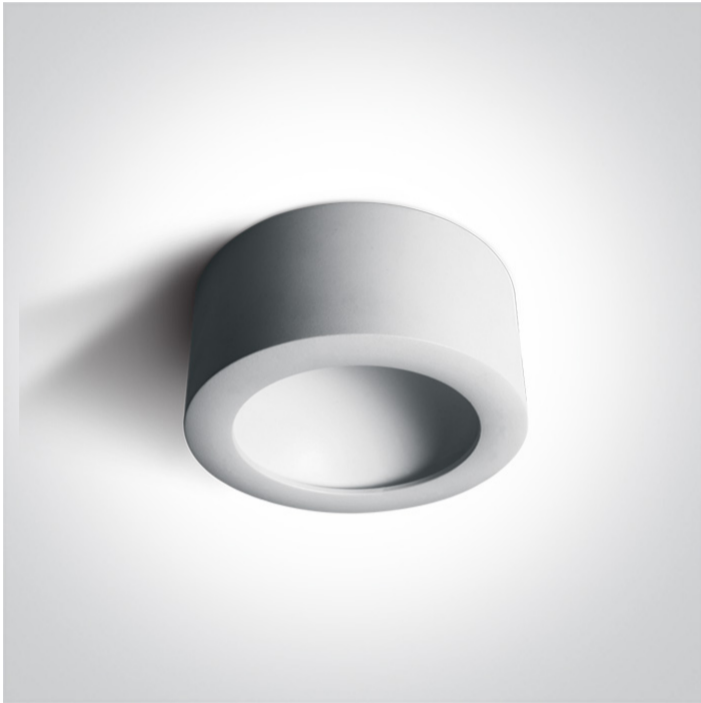


14 Wall & Ceiling LED > The Hidden Light Cylinders Range

12116FD/W/W



16W LED Hidden Light Cylinders Range.

Complete with non-dimmable LED driver.

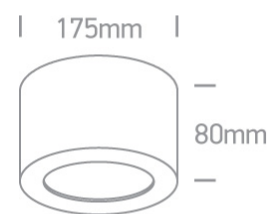
Complies with standard EN60598-1 and any other specific standards.



Downloads



Dimensions



Gallery





Physical Specification

Item Group	14 Wall & Ceiling LED
Family	The Hidden Light Cylinders Range
Order Code	12116FD/W/W
Colour	White
Material	Die Cast
Shape	Circular
Height	80mm

Diameter	175mm
Surface Ceiling	Yes
Indoor	Yes
Adjustable	No

Electrical Characteristics


Gear	Built In
Fitting + Driver	
Input Voltage	220-240V
50 Hz	Yes
60 Hz	Yes
Safety Class	
Power(Watts)	16W
IP Rating	IP20
Light Source	LED built in
Dimmable	No
F Mark	

Fitting	
Input Type	Constant Current
Input Current	300mA
Voltage	50V
Power(Watts)	15W
IP Rating	IP20
Light Source	LED built in
LED Type	SMD 2835
LED Brand	Bridgelux

Gear	
Gear Type	Led Driver

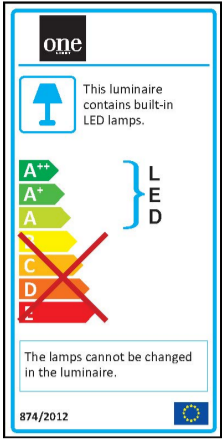
Input Voltage	220-240V
50 Hz	Yes
60 Hz	Yes
Power(Watts)	13,5-18W
Power Factor	0,9
Constant Current	Yes
300mA	45-60V
IP Rating	IP20
Safety Class	
Dimmable	No
Housing Material	Plastic
Brand	KEGU

Illumination Data

Colour Temperature	3000K
Lumen Output	1100lm
Light Efficiency	68,75lm/W
CRI	80
Illumination Diagram	
Dark Light	Yes

Packing Info

Box Length	18cm
Box Width	18cm
Box Height	8,5cm
Box Weight	0,94Kg
Pcs/Carton	20
Barcode	5291889053460
HS Code	9405409900



Certification & Warranty

Warranty

2 Years

Weee Directive

Yes

switch to
one light!

