

## 04 Recessed Spots Adjustable LED>The Interchangeable Rings Range

## 51112H/B/W

Aluminium



12W COB LED adjustable recessed spot with interchangeable rings.

Ring must be ordered separately.

Complete with 300mA driver.

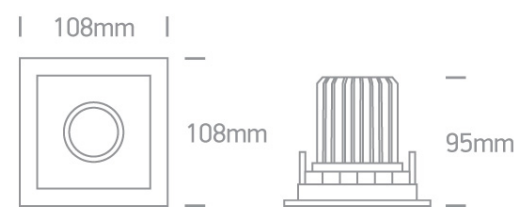
Complies with standard EN60598-1 and any other specific standards.



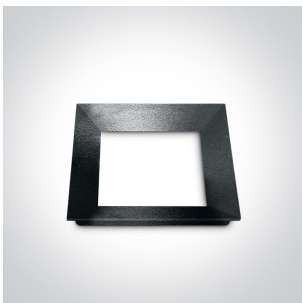
### Downloads



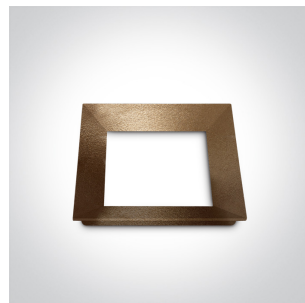
### Dimensions



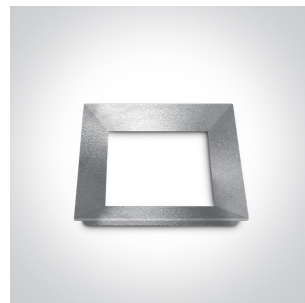
### Must be ordered separately



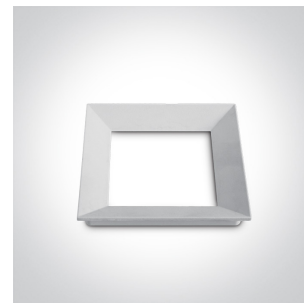
050088/B



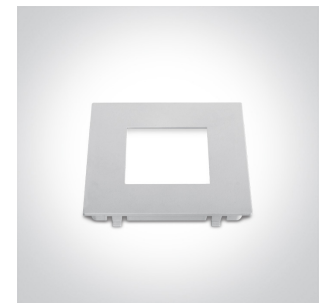
050088/BS



050088/G



050088/W





050088A/W


### Physical Specification


Item Group	04 Recessed Spots Adjustable LED
Family	The Interchangeable Rings Range Aluminium
Order Code	51112H/B/W
Colour	Black
Material	Aluminium
Shape	Rectangular

Length	108mm
Width	108mm
Height	95mm
Cutout Hole Width	95mm
Cutout Hole Length	95mm
Recessed Ceiling	Yes
Depth Required	120mm
Indoor	Yes
Adjustable	1 Direction


### Electrical Characteristics

Gear	External-Included
Fitting + Driver	
Input Voltage	220-240V
50 Hz	Yes
60 Hz	Yes
Safety Class	
Power(Watts)	12W
IP Rating	IP20
Light Source	LED built in
Dimmable	No
F Mark	


Fitting	
Input Type	Constant Current
Input Current	300mA
Voltage	36V
Safety Class	
Power(Watts)	10,8V
IP Rating	IP20

Light Source	LED built in
LED Type	COB
LED Brand	Cree
LED Number	1
F Mark	

#### Gear

Gear Type	Led Driver
Input Voltage	220-240V
50 Hz	Yes
60 Hz	Yes
Power(Watts)	9-12W
Power Factor	0,9
Constant Current	Yes
300mA	30-40V
IP Rating	IP20
Safety Class	
Dimmable	No
Brand	Eaglerise

#### Illumination Data

Colour Temperature	3000K
Lumen Output	940lm
Light Efficiency	80lm/W
CRI	80
Beam Angle	60°
Illumination Diagram	

#### Packing Info

Box Length	12cm
------------	------

Box Width	12cm
Box Height	12cm
Box Weight	0,401Kg
Pcs/Carton	30
Barcode	5291889054085
HS Code	9405409900

#### Certification & Warranty

Warranty	3 Years
Weee Directive	Yes

switch to  
**one light!**

one  
LIGHT

