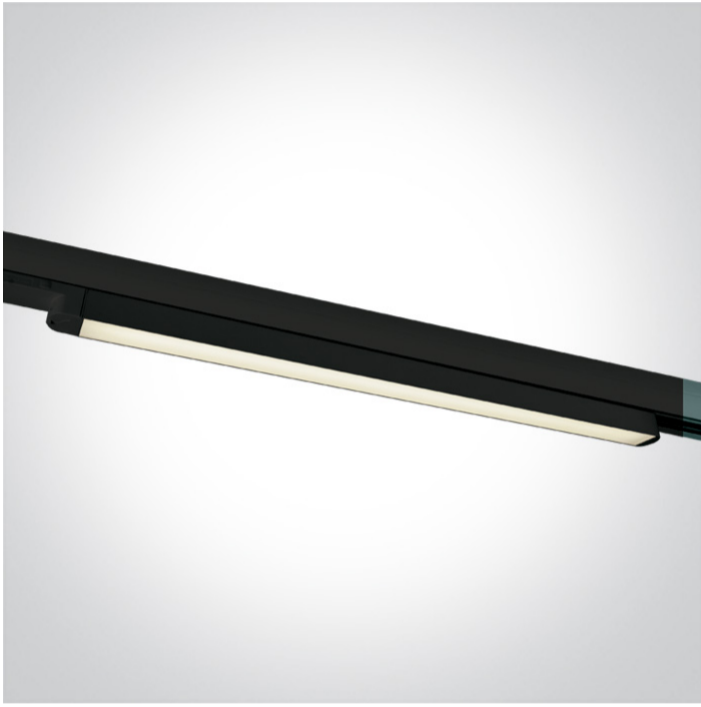


10 Track Spots > LED Linear Track Light

## 65018T/B/C



LED Linear track light, high lumen output ideal for shops and showrooms.

Complete with driver.

Complies with standard EN60598-1 and any other specific standards.



### Downloads



### Dimensions



### Related items



40002A/B




40003A/B

### Physical Specification

Item Group	10 Track Spots
Family	LED Linear Track Light
Order Code	65018T/B/C
Colour	Black
Material	Aluminium
Diffuser Material	PC
Shape	Rectangular

Length	650mm
Width	30mm
Height	30mm
Track mounted	Yes
Indoor	Yes
Adjustable	No

## Electrical Characteristics


Gear	Built In
Fitting + Driver	
Input Voltage	100-240V
50 Hz	Yes
60 Hz	Yes
Safety Class	
Power(Watts)	16W
IP Rating	IP20
Light Source	LED built in
Dimmable	No

Fitting	
Input Type	Constant Current
Input Current	400mA
Voltage	38V
Power(Watts)	15,2W
IP Rating	IP20
Light Source	LED built in
LED Type	SMD 2835

Gear	
Gear Type	Led Driver

Input Voltage	100-240V
50 Hz	Yes
60 Hz	Yes
Power(Watts)	9,6-16W
Power Factor	0,9
Constant Current	Yes
400mA	24-40V
IP Rating	IP20
Safety Class	
Dimmable	No
Housing Material	Plastic
Output Terminal	Connector

#### Illumination Data

Colour Temperature	4000K
Lumen Output	1600lm
Light Efficiency	100lm/W
CRI	80
Beam Angle	110°
Illumination Diagram	

#### Packing Info

Box Length	72,4cm
Box Width	6,8cm
Box Height	8,8cm
Pcs/Carton	12
Barcode	5291889061922
HS Code	9405409900

#### Energy Label



## Certification & Warranty

Warranty

2 Years

Weee Directive

Yes

switch to  
**one light!**

**one**  
LIGHT

