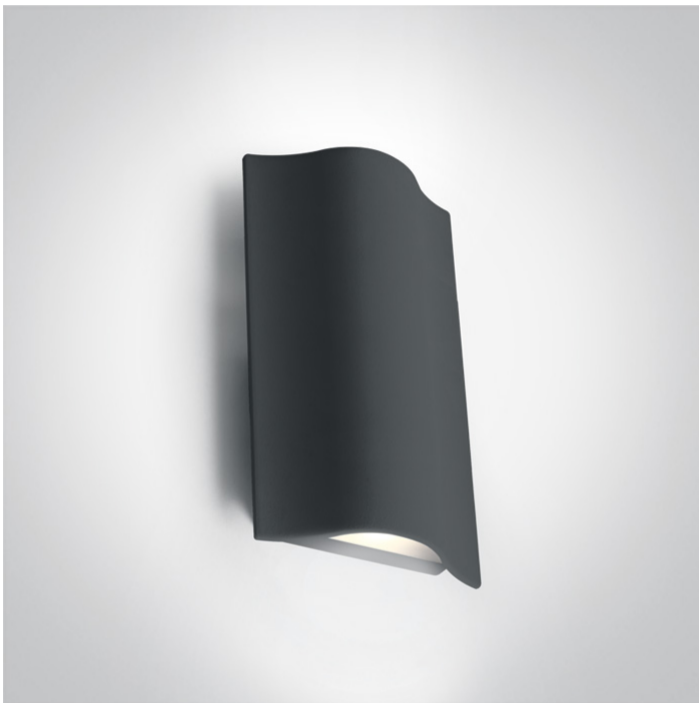


14 Wall & Ceiling LED>The Roof tile Range Die cast

67422A/AN/W



2x6W COB LED Outdoor Slim Range Up & down beam.

Complete with driver

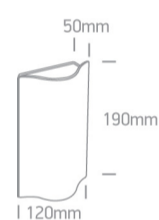
Complies with standard EN60598-1 and any other specific standards.



Downloads



Dimensions



Physical Specification

Item Group	14 Wall & Ceiling LED
Family	The Roof tile Range Die cast
Order Code	67422A/AN/W
Colour	Anthracite
Material	Die Cast
Shape	Rectangular
Length	190mm
Width	120mm
Height	50mm
Surface Wall	Yes
Indoor	Yes
Outdoor	Yes

Gear

Built In

Fitting + Driver

Input Voltage

220-240V

50 Hz

Yes

60 Hz

Yes

Safety Class



Power(Watts)

2x6W

IP Rating

IP54

Light Source

LED built in

Dimmable

No

F Mark



Fitting

Input Type

Constant Current

Input Current

500mA

Voltage

20V

Power(Watts)

10W

IP Rating

IP54

Light Source

LED built in

LED Type

COB

LED Brand

Edison

Gear

Gear Type

Led Driver

Input Voltage

220-240V

50 Hz

Yes

60 Hz


Yes

Power(Watts)


6-12W

Power Factor

0,5

Constant Current	Yes
500mA	12-24V
IP Rating	IP20
Safety Class	
Dimmable	No
Ambient Temp	50°C
Operating Temp	75°C
Housing Material	Plastic
Output Terminal	Cable
Manufacturer	Eaglerise

Illumination Data

Colour Temperature	3000K
Lumen Output	2x400lm
Light Efficiency	66,67lm/W
CRI	80
Illumination Diagram	

Packing Info

Box Length	13cm
Box Width	5,5cm
Box Height	21cm
Box Weight	0,71Kg
Pcs/Carton	12
Barcode	5291889053026
HS Code	9405409900

Energy Label



Certification & Warranty

Warranty

2 Years

Weee Directive

Yes

switch to
one light!

one
LIGHT

