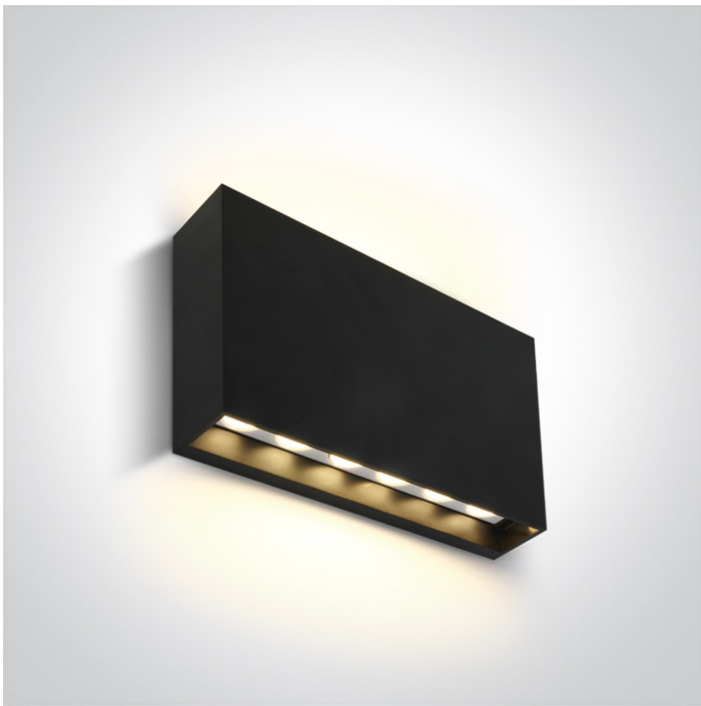


14 Wall & Ceiling LED>Indoor/Outdoor Wall Lights ABS+PC

67472/AN/W



6W SMD LED wall light .

Complete with 300mA driver.

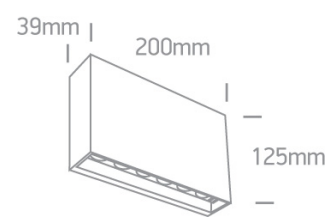
Complies with standard EN60598-1 and any other specific standards.



Downloads



Dimensions



Gallery






Physical Specification


Item Group	14 Wall & Ceiling LED
Family	Indoor/Outdoor Wall Lights ABS+PC
Order Code	67472/AN/W
Colour	Anthracite
Material	ABS
Diffuser Material	PC
Shape	Rectangular

Length	200mm
Width	39mm
Height	125mm
Surface Wall	Yes
Indoor	Yes
Outdoor	Yes
Adjustable	No


Electrical Characteristics

Gear	Built In
Fitting + Driver	
Input Voltage	220-240V
50 Hz	Yes
60 Hz	Yes
Safety Class	
Power(Watts)	2x6W
IP Rating	IP65
Light Source	LED built in
Dimmable	No
F Mark	

Fitting	
Input Type	Constant Current
Input Current	300mA
Voltage	38V
Safety Class	
Power(Watts)	11,4W
IP Rating	IP65
Light Source	LED built in
LED Type	SMD 2835

LED Brand	Epistar
LED Number	12
Gear	
Gear Type	Led Driver
Input Voltage	220-240V
50 Hz	Yes
60 Hz	Yes
Power(Watts)	6-12W
Power Factor	0,9
Constant Current	Yes
300mA	20-40V
IP Rating	IP20
Safety Class	
Housing Material	Plastic
Brand	Eaglerise

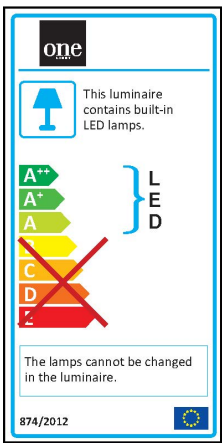
Illumination Data

Colour Temperature	3000K
Lumen Output	2x500lm
Light Efficiency	83,33lm/W
CRI	80
Illumination Diagram	

Packing Info

Pcs/Carton	20
Barcode	5291889063261
HS Code	9405104090

Energy Label



Certification & Warranty

Warranty

2 Years

Weee Directive

Yes

switch to
one light!

one
LIGHT

