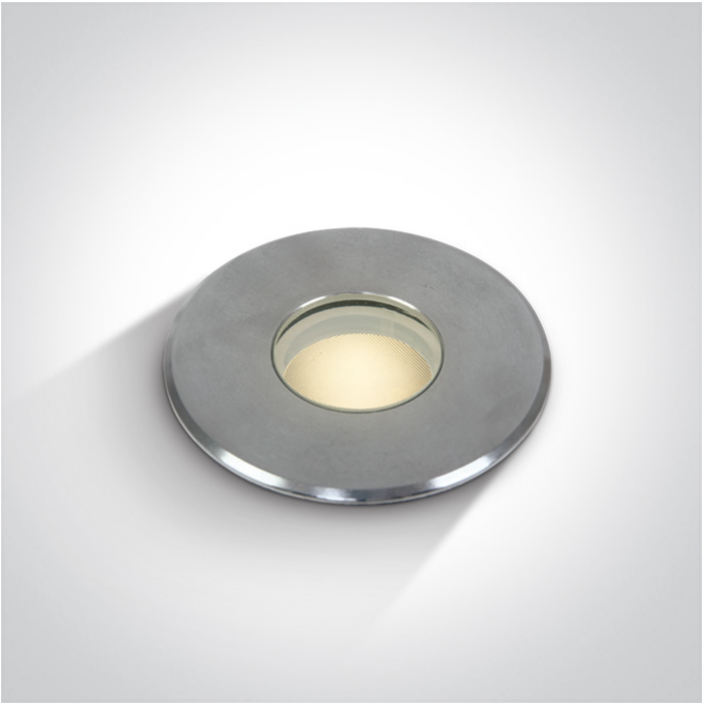




19 Wall Recessed & Inground>The COB Inground Range 2-6W

69028/W



2W COB LED inground, IP67, stainless steel 316, for path illumination.

Supplied with non-dimmable LED driver.

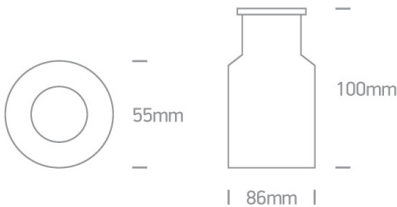
Complies with standard EN60598-1 and any other specific standards.



Downloads



Dimensions



Gallery






Physical Specification

Item Group	19 Wall Recessed & Inground
Family	The COB Inground Range 2-6W
Order Code	69028/W
Colour	Stainless Steel
Material	Stainless Steel 316
Diffuser Material	Glass
Shape	Circular

Height	100mm
Diameter	55mm
Cutout Hole Diameter	86mm
Inground	Yes
Depth Required	100mm+300mm drainage
Indoor	Yes
Outdoor	Yes
Adjustable	No

Electrical Characteristics

Gear	Built In
Fitting + Driver	
Input Voltage	100-240V
50 Hz	Yes
60 Hz	Yes
Safety Class	
Power(Watts)	2W
IP Rating	IP67
Light Source	LED built in
Dimmable	No
Cable Length	50cm
F Mark	


Fitting	
Input Type	Constant Current
Input Current	600mA
Voltage	3V
Safety Class	
Power(Watts)	1,8W
IP Rating	IP67

Light Source
LED Type
LED Brand

LED built in
COB
Osram


Gear

Gear Type
Input Voltage
50 Hz
60 Hz
Power(Watts)
Power Factor
Constant Current
600mA
IP Rating
Safety Class
Dimmable
Ambient Temp
Operating Temp
Housing Material
Output Terminal
Brand
Protection

Led Driver
100-240V
Yes
Yes
2W
0,9
Yes
3V
IP20

No
-20~+55°C
80°C
Plastic
Connector
BTEC
Short Circuit

Illumination Data

Colour Temperature
Lumen Output
Light Efficiency
CRI
Beam Angle
Illumination Diagram

3000K
65lm
32,5lm/W
80
30°


Packing Info

Box Weight	0,5Kg
Barcode	5291889038702
HS Code	9405409900

Certification & Warranty

Warranty	2 Years
Average Lifetime	50000Hours
Weee Directive	Yes

switch to  
one light!

