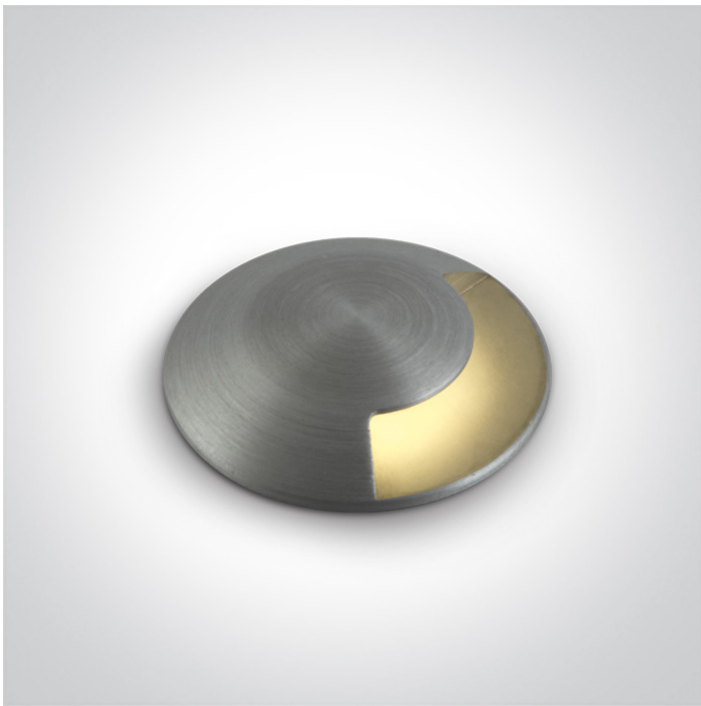


19 Wall Recessed & Inground>The Inground Mini Series Natural Aluminium

69042A/AL/W



1W COB LED inground, IP67, aluminium, for path illumination.

Requires 350mA driver.

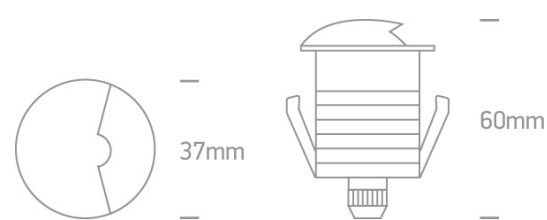
Complies with standard EN60598-1 and any other specific standards.



Downloads



Dimensions



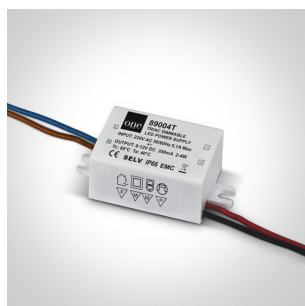
Gallery



Must be ordered separately



89004



89004T


## Physical Specification

Item Group	19 Wall Recessed & Inground
Family	The Inground Mini Series Natural Aluminium
Order Code	69042A/AL/W
Colour	Aluminium
Material	Natural Aluminium
Diffuser Material	Glass
Shape	Circular
Height	53mm
Diameter	37mm
Cutout Hole Diameter	30mm decking 35mm concrete
Inground	Yes
Depth Required	80mm deck 95mm+300mm drainage Concrete
Indoor	Yes
Outdoor	Yes
Adjustable	No
IK Rating	8


## Electrical Characteristics

### Fitting

Input Type	Constant Current
Input Current	350mA
Voltage	3,1V
Safety Class	
Power(Watts)	1W
IP Rating	IP67
Light Source	LED built in
LED Type	SMD
LED Brand	Cree

LED Number	1
Cable Length	200cm
F Mark	

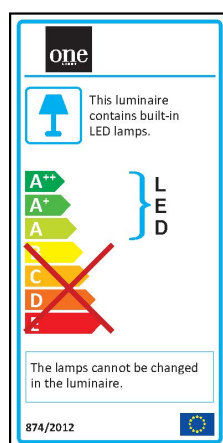
### Illumination Data

Colour Temperature	3000K
Lumen Output	30lm
Light Efficiency	30lm/W
CRI	85
Illumination Diagram	

### Packing Info

Box Length	6,5cm
Box Width	5cm
Box Height	10,5cm
Box Weight	0,188Kg
Pcs/Carton	50
Barcode	5291889045250
HS Code	9405409900

### Energy Label



Warranty

2 Years

Average Lifetime

50000Hours

Weee Directive

Yes

switch to  
**one light!**

one  
LIGHT

