

**PRODUCT DESCRIPTION**

- Cover dedicated to the OBIT, KIDES, DES, GLADES extrusions

Fill empty fields

Product nr.

Fixture type

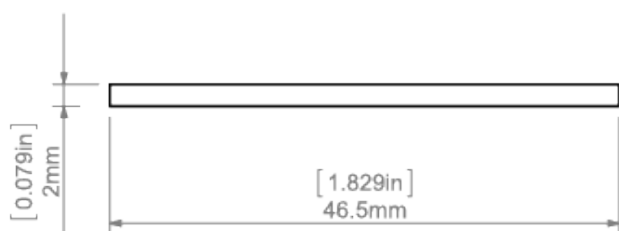
Company

Job name

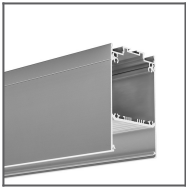
Date

**TECHNICAL SPECIFICATION**

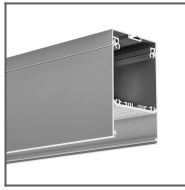
Material	PC
Available length	1000 mm, 2000 mm, 3000 mm
UV resistance	no

**TECHNICAL DRAWING**

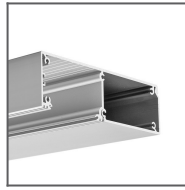
RELATED PROFILES



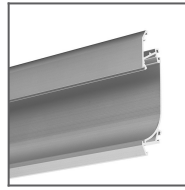
DES Profile  
Ref: 18030



GLADES Profile  
Ref: 18036



KIDES Profile  
Ref: 18031



OBIT Profile  
Ref: W4826