

## PRODUCT DESCRIPTION

- Two lighting directions
- Wide lighting angle
- Lighting fixture with round cross-section
- Wide range of accessories

### FINISH :

Silver anodized RAL 

\*Custom colors available upon request



Fill empty fields

Product nr.

Fixture type

Company

Job name

Date

## TECHNICAL SPECIFICATION

### Application

- main and decorative lighting.

### Mounting

- suspended, using dedicated accessories.

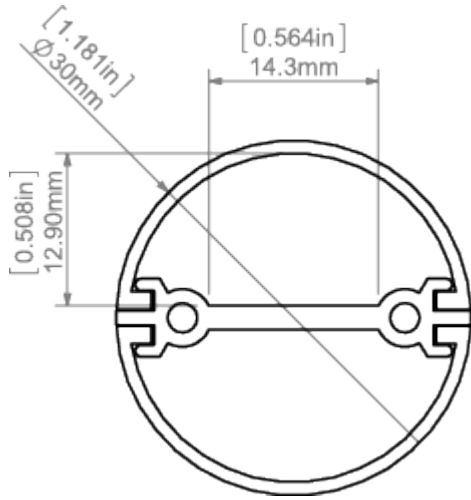
### Additional information

- a wide range of accessories that allows various mounting of the lighting fixture in any direction.

## AVAILABLE LENGTHS

Ref. nr.	surface finish	available lengths
C0788ANODA_1	Silver anodized	1000mm
C0788ANODA_2	Silver anodized	2000mm
C0788ANODA_3	Silver anodized	3000mm
C0788L9010OD_2	White RAL	2000 mm

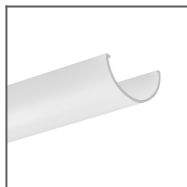
TECHNICAL DRAWING



## RELATED PRODUCTS

### COVERS

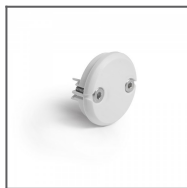
#### FROSTED COVERS



JAZ-DUO frosted  
Cover  
Ref: 17163

### END CAPS

#### REGULAR END CAPS



JAZ-DUO-N grey  
End cap  
Ref: 42641

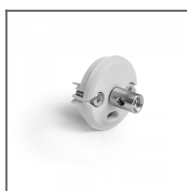


JAZ-DUO-W grey  
End cap  
Ref: 42642



JAZ-DUO-W white  
End cap  
Ref: 42660

#### REGULAR END CAPS WITH HOLE

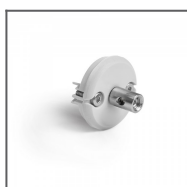


JAZ-DUO-N-OTW  
grey End cap  
Ref: 42644



JAZ-DUO-N-FI-6,5  
grey End cap  
Ref: 42643

#### ELECTRICITY CONDUCTIVE END CAPS



JAZ-DUO-N grey  
electricity  
conductive End  
cap  
Ref: 42632



JAZ-DUO-W grey  
electricity  
conductive End  
cap  
Ref: 42633

## ACCESSORIES

### FASTENERS & MOUNTING ACCESSORIES



LIN Fastener  
silver  
Ref: 42294



Isolated CU cable  
FI-1.35 mm  
Ref: 70310

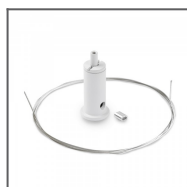
### MOUNTING SETS



RG-1 Fastener set  
black  
Ref: 42647L9005



RG-1 Fastener set  
silver  
Ref: 42647NI



RG-1 Fastener set  
white  
Ref: 42647L9010



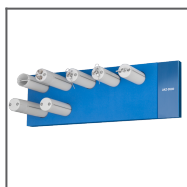
RG-1 Fastener set  
silver satin  
Ref: 42647GSS

### SEALING COMPONENTS



6 x 1.2 Gland  
Ref: 00802

### MARKETING MATERIALS



Foam 70342  
Ref: 70342



Display  
P230-90173M  
Ref: 90173M