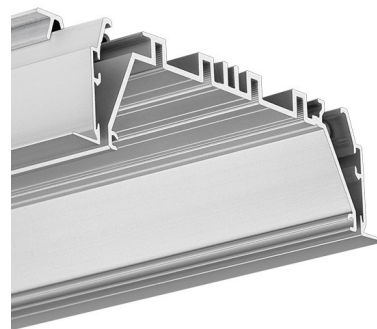


## PRODUCT DESCRIPTION

The information contained in the description applies to the MOD-KOL-100 system (a set of [RAM-KOL-100](#), [OMODO-100](#) profiles).

- Wall-to-wall mounting possible
- Openwork structure of the Mounting track
- Adjustable elements of the mounting track
- Mounting to drywall boards
- Hardly visible aluminum elements
- Easy maintenance
- Glare rating UGR <19 possible
- High lumen output



Fill empty fields

Product nr.

Fixture type

Company

Job name

Date

## TECHNICAL SPECIFICATION

### Application

- main and decorative lighting.

### Mounting

- in drywall, using a dedicated mounting track and dedicated accessories,
- can be easily connected into runs,
- the cover is cut to the length of the profile.

### Additional information

MOD-KOL-100 fixtures are designed for 7 LED tapes (10 mm wide) or 8 tapes (8 mm wide) or two current modules up to 24 mm wide.

The lighting fixture is designed so that the "core" of the lighting fixture (profile with LED tapes, power supply, wires and end caps) can be prepared in advance, in factory conditions. The only thing to be done at the installation site is to insert the prepared "core" (OMODO-100) into the pre-installed mounting channel (RAM-KOL-100).

Two locking bolts must be used for every 1 m of lighting fixture. For lighting fixtures shorter than 1 m, at least 2 bolts must be used.

The width of the gap in the drywall for RAM-KOL-100: from 108 mm to 113 mm.

The following are examples of covers are compatible with MOD-KOL-100:

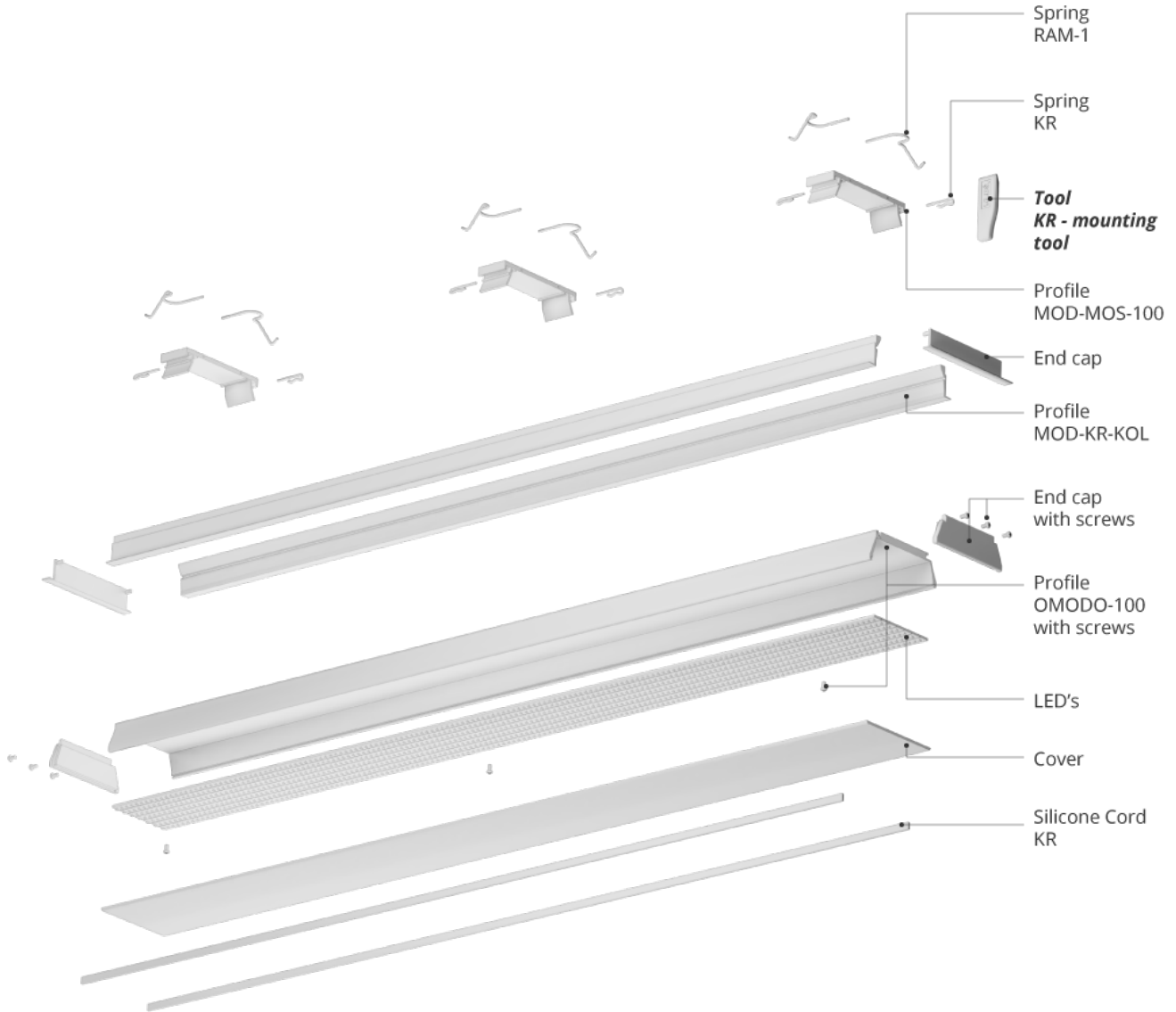
- **JUN-100** prismatic material: PMMA, length: 1.5 m, UV resistant, glare rating UGR  $\leq$  19 possible,
- **POL-100** frosted, material: PC, lengths: 1 m, 2 m, 3 m, UV resistant.

The gaps between the edges of the mounting channel and the "core" of the fixture can be finished with a dedicated silicone cord.

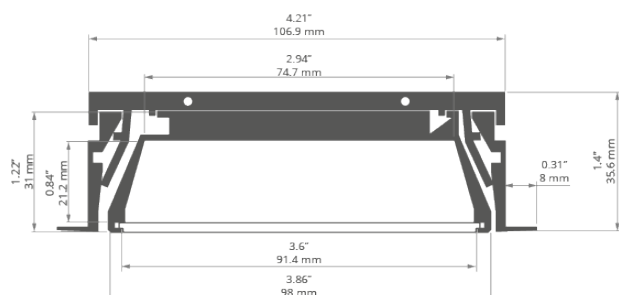
**Animation: Profile system MOD-KOL-50**

span {font-weight:600;}

**Scheme: Profile system MOD-KOL-100**



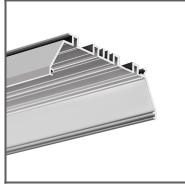
**TECHNICAL DRAWING**



RELATED PROFILES



RAM-KOL-100  
Profile  
Ref: 18062



OMODO-100  
Profile  
Ref: 18058

## RELATED PRODUCTS

## MARKETING MATERIALS



Foam 70468  
Ref: 70468