

Cover BENCO-5

Ref. B17002

NEW



- Chamber enabling the installation and sealing of a 3mm LED strip
- installation in bent profiles
- Many colors of the sealing sleeve, including phosphorescent
- Cover offered in sections up to 10 m

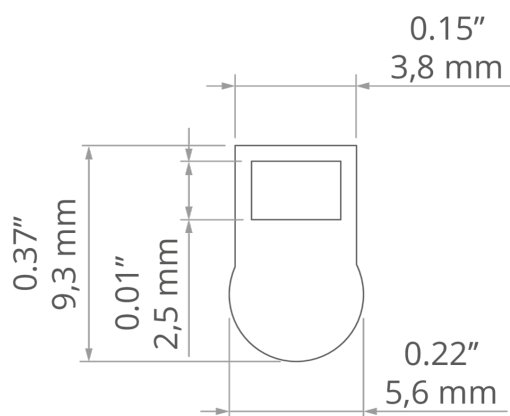
MOUNTING

- Snapped in a dedicated profile

ADDITIONAL INFORMATION

- standard lengths of KLUŚ profiles and covers: 1000 mm (tolerance ± 1.5 mm) and 2005 mm / 3010 mm (tolerance + 5 mm); for selected covers: 6050 mm, 10050 mm (tolerance + 5 mm)
- when choosing a different length of profiles / covers than available in the standard, you should additionally choose the cutting service at KLUŚ

TECHNICAL DRAWING



TECHNICAL SPECIFICATIONS

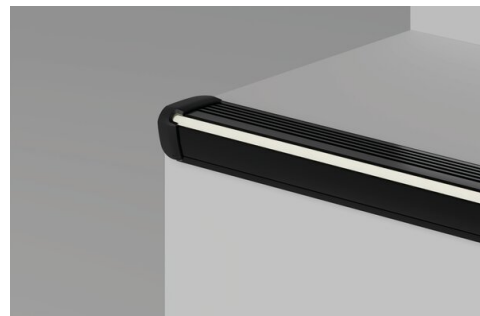
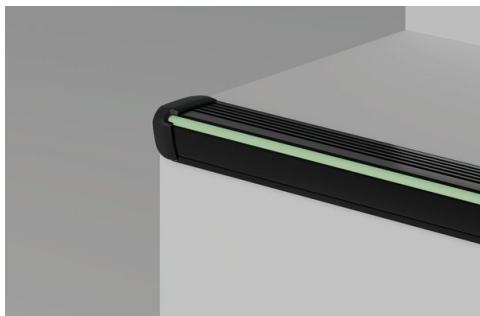
Material	silicon
Shape	round
Width	5.6 mm
Height	9.3 mm
Possibility of obtaining a line of light	yes
Possibility of bending	yes

Finish	Length	Ref
phosphorescent	1050 mm	B17002N_1
	2060 mm	B17002N_2
	3060 mm	B17002N_3
	10000 mm	B17002N_10
orange	1050 mm	B17002R_1
	2060 mm	B17002R_2
	3060 mm	B17002R_3
	10000 mm	B17002R_10
grey	1050 mm	B17002Y_1
	2060 mm	B17002Y_2
	3060 mm	B17002Y_3
	10000 mm	B17002Y_10

Cover BENCO-5

Ref. B17002

SAMPLE PROJECTS



RELATED PROFILES > FOR BUILDING WALL LAMPS AND ILLUMINATING WALLS



ROGER
A06885

RELATED PROFILES > STAIRS ILLUMINATION



STEKO-PLUS
A06888