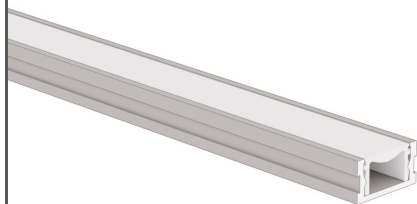


Profile HR-SLIM

Ref. A00015

NEW



IP54

IP65

- LED profile that enables the transition of a light line from the floor to the wall and then to the ceiling, creating uniform illumination without visible diodes
- It is ideal for residential spaces, including dining rooms, bedrooms, living rooms, and bathrooms, allowing users to enhance interiors with the glow of light
- A profile perfectly suited for use with ceramic tiles, terracotta, and quartz sinters
- Once the cover (pressed from above) is installed, it is walkable, scratch-resistant, and crack-resistant
- Resistant to high pressure, with a maximum load capacity of up to 500 kg, IK07
- Allows the creation of circles and arcs on floors, walls, and ceilings
- Sealing to IP54 is possible with a dedicated cover that is very easy to install – click-in system
- No dimming effect of the light line towards corners or at profile connections
- IP67 sealing can be achieved using silicone sealing

APPLICATION

- decorative and signal lighting

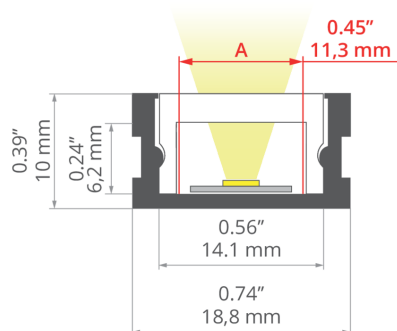
MOUNTING

- in the substrate using mounting adhesives or screws

ADDITIONAL INFORMATION

- standard lengths of KLUŚ profiles and covers: 1000 mm (tolerance ± 1.5 mm) and 2005 mm / 3010 mm (tolerance + 5 mm); for selected covers: 6050 mm, 10050 mm (tolerance + 5 mm)
- when choosing a different length of profiles / covers than available in the standard, you should additionally choose the cutting service at KLUŚ

TECHNICAL DRAWING



TECHNICAL SPECIFICATIONS

Material	aluminum
Possible fixture IP	65, 54
Profile cross-section	rectangular
Width	18.8 mm
Height	10 mm
Maximum length on request	6 mm
LED gluing width A	10 mm
Number of LED strips A (8 mm wide)	1
Width of the glow	14.4 mm
Possibility of obtaining a line of light	yes
Possibility of bending	yes
Radius of the light arc	yes
Down	1000 mm
Building type	Commercial, Residential, HoReCa object, Retail, Entertainment/ Arts, Outdoor

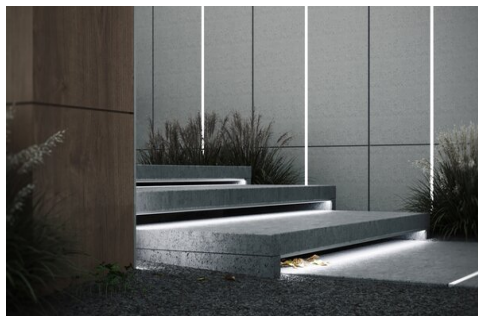
Color	Length	Ref
■ silver anodized	1000 mm	A00015A_1
	2005 mm	A00015A_2
	3010 mm	A00015A_3
■ silver non anodized	1000 mm	A00015N_1
	2005 mm	A00015N_2
	3010 mm	A00015N_3

Profile HR-SLIM



Ref. A00015

Facility zone	lobby / foyer, communication routes and corridors, bathroom, kitchen, fascade lighting, entrances and gates
The cover is cut to the length of the profile	yes
Wire out back of extrusion	yes
Possibility of bending in the light plane	yes

SAMPLE PROJECTS



RELATED ACCESSORIES > COVERS

NAME			MATERIAL	MATERIAL TRANSMITTANCE	COLOR	REF.
Cover HR-15	NEW		PC		frosted	B17153F
Cover HR-IP-15	NEW		PC		frosted	B17154F

RELATED ACCESSORIES > END CAPS

NAME			MATERIAL	COLOR	REF.
End cap HR-SLIM	NEW		stainless steel	silver	C28302C01

RELATED ACCESSORIES > OTHER RELATED ACCESSORIES > TECHNICAL AND PROTECTIVE INSERTS



PROTECTIVE INSERT

TECH-15
C28287C02